

The information herein is the property of PLESSEY PERIPHERAL SYS. Transmittal receipt or possession of the information does not comply, license, or imply any rights to use, sell, or manufacture from the information and no reproduction or publication of it, in whole or in part, shall be made without written authorization from PLESSEY PERIPHERAL SYS.

REVISIONS

LTR	DESCRIPTION	DATE	APPROVED
A	Released to Production per E.O. 6089	1-16-80	<i>[Signature]</i>

TABLE OF CONTENTS


Drawing Number	Title	Rev.	No. Sheets
MD 703205	Maintenance Drawing Package Cover Sheet	A	1
703205	Kit, Cache Memory, PM-KK11A	A	1
703160	Board Assembly, Cache Memory, PM-KK11A	A	1
PL 703160-100	Parts List, " "	A	2
SD 703160	Schematic Diagram, " "	A	11
703190	Board Assembly, 2 Connector, PM-KK11A	A	1
703195	Board Assembly, 3 Connector, PM-KK11A	A	1
701784	Cable Assembly, Maintenance, PM-KK11A	A	1

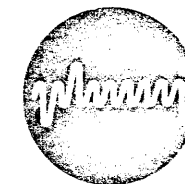
Maintenance Drawing Package

Products Covered by this Drawing Package

PM-KK11A

PRODUCTION RELEASE

DO NOT SCALE DRAWING	CONTRACT NO.	 Plessey Peripheral Systems
SCREW THREADS PER HANDBOOK H-28	DRAWN N. Glass 1-17-80	
COUNTERBORE AND SPOTFACE FILLET RAD: TO BE .010 MAXIMUM	CHECK <i>[Signature]</i> 1-17-80	
REMOVE ALL BURRS AND BREAK SHARP EDGES EQUIVALENT TO .012R	DESIGN <i>[Signature]</i> 1-17-80	
ROUGHNESS OF MACHINED SURFACES 125 PER USAS B46.1.	PROJ. ENGR. <i>[Signature]</i> 1-17-80	
STANDARD HOLE TOLERANCE PER AND 10327		DRAWING TITLE: MAINTENANCE DRAWING PACKAGE PM-KK11A Cache Memory
TOLERANCES ON .XX + .03 .XXX + .010 ANGLES + 2° 30'		SIZE B CODE IDENT NO. 52648 DWG NO. MD 703205
INTERPRET DIMENSIONS AND TOLERANCES PER USAS Y14.5		SCALE: SHEET 1 OF 1 (19)
DIMENSIONS ARE IN INCHES AND APPLY AFTER HEAT TREAT AND FINISH UNLESS OTHERWISE SPECIFIED	OTHER APPROVALS	



Plessey Peripheral Systems

REVISIONS		
LTR	DESCRIPTION	DATE
A	REL TO PROD E03148	7-24-79

APPLICATION	USED ON

PRODUCTION RELEASE

REV LTR	SHEET	1	2	3	4	5	6	7	8	9	10	11	12	13	14	15	16	17	18	19	20	21
A	A																					

<small>DO NOT SCALE DIMENSIONS</small>	CONTRACT NO.	Plessey Peripheral Systems
<small>REMOVE THREADS PER DIMENSIONAL SIZE</small>	DRAWN <i>TOM COMEY</i> 2-8-79	DWG TITLE
<small>COUNTERSINK AND PORTAGE FILLET RADIUS TO BE SHOWN</small>	CHECK <i>T. Gienke</i> 2-9-79	<i>KIT / CACHE MEMORY</i>
<small>REMOVE ALL BURRS AND BREAK SHARP EDGES EQUIVALENT TO 0.005</small>	DESIGN <i>J. J. G.</i> 2-13-79	<i>PM-KK11A</i>
<small>ROUGHNESS OF MACHINED SURFACES 125 PER UNLESS NOTED</small>	PROJ. ENGR. <i>J. J. G.</i> 2-9-79	SIZE
<small>STANDARD HOLE TOLERANCES PER ANSI 1987</small>	<i>J. J. G.</i> 2-13-79	CODE IDENT NO.
<small>TOLERANCES ON .005 TO .010 DIA. H & J AND ANGLES: 1/8"</small>	OTHER	DWG NO.
<small>INTERPRET DIMENSIONS AND TOLERANCES PER UNLESS NOTED</small>	APPROVALS	A 52648
<small>DIMENSIONS ARE IN INCHES AND APPLY AFTER HEAT TREAT AND FINISH</small>		703205
<small>UNLESS OTHERWISE SPECIFIED</small>		SCALE: <i>NONE</i>
		SHEET <i>1</i> OF <i>2</i>

PARTS LIST			Plessey Peripheral Systems		PARTS LIST NO.	SH	REV
				703205		2	A
ENTER THIS REV LTR	NOTE	PART/ASSY NO. & QTY PER ASSY	UNIT MEAS	PART NO. OR IDENTIFYING NO.	NOMENCLATURE OR DESCRIPTION	SPEC OR SOURCE	FINO D
			-100				
			X	703205	KIT/CACHE MEMORY		
			/	701784-100	CABLE ASSEMBLY MAINTENENCE PM-KK11A		1
			/	703195-100	BOARD ASSEMBLY JUMPER BD. 3-CONN		2
			/	703190-100	BOARD ASSEMBLY JUMPER BD. 2-CONN		3
			/	703160-100	ASSEMBLY, CACHE MEMORY		4
			/	CFKKA	DIAGNOSTIC PACKAGE	DEC	5
			/	MA703205	MANUAL		6
			/	MD703205	MAINTENANCE DRAWING PACKAGE		7

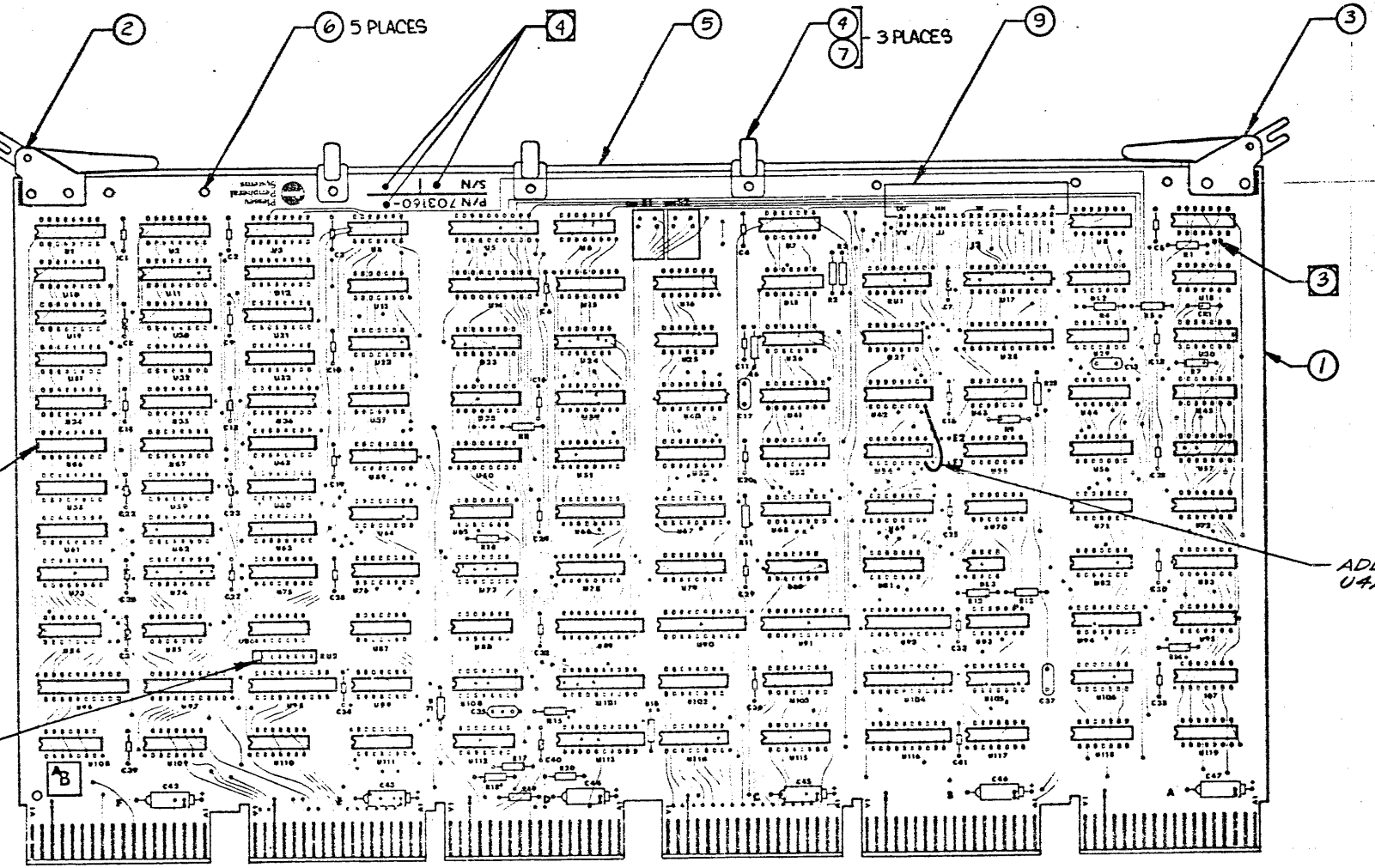
SIZE **B** CODE IDENT NO. **703205** DWG NO. **703205**
 SCALE **A** REV **A** SHEET **1** of **1**

The information hereon is the property of PLESSEY PERIPHERAL SYS. Transmittal, receipt or possession of the information does not imply, license, or imply any rights to use, sell, or manufacture from this information and no reproduction or publication of it, in whole or in part, shall be made without written authorization from PLESSEY PERIPHERAL SYS.

The information herein is the property of PLESSEY PERIPHERAL SYS. Transmittal, receipt or possession of the information does not constitute license or imply any rights to use, sell or manufacture from this information and no reproduction or publication of it, in whole or in part, shall be made without written authorization from PLESSEY PERIPHERAL SYS.

ZONE		REVISIONS		DATE	APPROVED
LTR	DESCRIPTION				
A	REL TO PROD EO 3084			8-7-79	<i>[Signature]</i>

703160



NOTCH INDICATES PIN 1 END OF ALL I.C.'S

BAR INDICATES PIN 1 END OF ALL R.U.'S

ADD JUMPER U42-B TO U54-B

← .050 MAX (5)
← .350 MAX COMPONENT HEIGHT

PRODUCTION RELEASE

- (5) COMPONENT LEAD TRIM AND SOLDER BUILD-UP TO BE AS NOTED.
 - (4) MARK ASSEMBLY VERSION NUMBER, LATEST REVISION LETTER AND SERIAL NUMBER WITH .12 HIGH CHARACTERS USING BLACK INK PER MIL-M-13231, GROUP III. LOCATION APPROX. AS SHOWN.
 - (3) COMPONENT DESIGNATIONS ARE FOR REFERENCE ONLY AND DO NOT APPEAR ON PART.
2. FOR SCHEMATIC DIAGRAM SEE SD703160
1. ASSEMBLE AND INSPECT PER WORKMANSHIP STANDARDS MANUAL.

NOTES: UNLESS OTHERWISE SPECIFIED

PART/ASSY NO. & QTY PER ASSY		CONTRACT NO.		SPEC/SOURCE		CODE IDENT NO.	FIND NO.
	X	FOR PARTS LIST SEE PL703160-100					5
	-100	NOTE: PART OR IDENTIFYING NO.	NOMENCLATURE OR DESCRIPTION / MATERIAL				4
PARTS LIST		CONTRACT NO.		SPEC/SOURCE		CODE IDENT NO.	FIND NO.
PART/ASSY REV LTR	DO NOT SCALE DRAWING	DRAWNR. RAYTTINEN 13-19-79		Plessey Peripheral Systems		DWG TITLE	
	SCREW THREADS PER HANDBOOK H-28	CHECK <i>[Signature]</i> 5-22-79		BOARD ASSEMBLY			
	COUNTERBORE AND SPOTFACE FILLET RADI TO BE .503 MAXIMUM	ENGR. <i>[Signature]</i> 1-20-79		CACHE MEMORY			
	REMOVE ALL BURRS AND BREAK SHARP EDGES EQUIVALENT TO .510R	PROJ. ENGR.		PM-KK11			
	ROUGHNESS OF MACHINED SURFACES 320 PER USAS 148.1	PROD. DESIGN		SIZE		CODE IDENT NO.	DWG NO.
	STANDARD HOLE TOLERANCE PER AND 285F	OTHER		D		52648	703160
	TOLERANCES ON .125 ± .003 .125 ± .002 .125 ± .001	APPROVALS:		SCALE: 1/1		SHEET 1 OF 1	
	INTERPRET DIMENSIONS AND TOLERANCES PER USAS 148.1	OTHER		DISTR NO. 125470		1 RF	
	DIMENSIONS ARE IN INCHES AND APPLY AFTER HEAT TREAT AND FINISH UNLESS OTHERWISE SPECIFIED						

PARTS LIST	Plessey Peripheral Systems		PREPARED BY	<i>J. W. Winkler</i>	12-12-77	PARTS LIST NO.	PL703160-100	REV LTR	A
	BOARD ASSEMBLY CACHE MEMORY FM-KK11		CHECKED BY	<i>R. F. Finkler</i>	12-14-77	CODE IDENT NO.	52648	REV LTR	SH 1 OF 8
			RESP	<i>S. J. J. J.</i>	12-14-77	REV LTR	B		
			APPRV	<i>P. G. L.</i>	12-14-77				
			DOC CONTROL	<i>S. J. J. J.</i>	12-18-77				

LTR	DESCRIPTION	DATE	APPROVED	LTR	DESCRIPTION	DATE	APPROVED
A	REL TO PROD E03084	8-7-77	<i>Let</i>				
PRODUCTION RELEASE							

REV STATUS OF SHEETS	REV LTR	A	A	A	A	A	A	A	A						
SHEET		1	2	3	4	5	6	7	8	9	10				

PARTS LIST	Plessey Peripheral Systems		CODE IDENT NO.	52648	PARTS LIST NO.	PL703160-100	REV LTR	A
			SH	2				

REFERENCE DESIGNATION	F I N D N O.	REFERENCE DESIGNATION	F I N D N O.	REFERENCE DESIGNATION	F I N D N O.	REFERENCE DESIGNATION	F I N D N O.
	11	U38,76	31	C42-47	65		
CR1	12	U75	32		66		
	13	U94	33	DL1,2	67		
	14	U39,40,41,51,52	34	R6	68		
U6,65,70,93	15	53	34	R9	69		
U18,24,43,106	16	U78,79	35	R10	70		
U56,71,105	17		36	R7,19,20	71		
U29,55	18	U23	37		72		
U81,82,88	19	U66,67,68	38	R2-5,12,13			
U7,8	20	U89,101,104,113,116	39	R18			
U27,72,77	21		40	R1,8,11,14-17,21,22			
U16,37	22	U4,13,22,84,85,86	41				
U57	23	U5,14,17,28,96,97,98	42	RU1			
U87	24	U90,91,92	43	RU2			
U118	25	U80,99,108-112	44				
U30	26	U100,102,103,114	45	C13			
U25,26	27	115	45	C17			
U44,107,119	28	U1-3,10-12,19-21		C35,37			
U9,69,45,83,95,117	29	31-36, 42, 46-48,54,58-63	46	C1-12,14-16,18-34,36,38-41			
U49,64	30	73,74					

PARTS LIST	Plessey Peripheral Systems		CODE IDENT NO.	52648	PARTS LIST NO.	PL703160-100	REV LTR	A
			SH	3				

NOTE	QTY REQD	PART OR IDENTIFYING NO.	NOMENCLATURE OR DESCRIPTION	SPECIFICATION	CODE IDENT NO.	ZONE	F I N D N O.	S Y M	C/I USAGE
	1	703157-001	PWB				1		
	1	111-1001-1	INSERTER/EXTRACTOR LEFT HAND	CALMARK			2		
	1	111-1001-2	INSERTER/EXTRACTOR RIGHT HAND	CALMARK			3		
	3	701568-001	SPACER, MOLDED, HEX PWB				4		
	1	701728-001	STIFFENER				5		
	5	SE-46 NICKEL PL	EYELET	USMC			6		
	3	SE-410 NICKEL PL	EYELET	USMC			7		
							8		
	1	87272-1	CONNECTOR/40 POS	AMP			9		
							10		
							11		
	1	138000-001	DIODE				12		
							13		

PARTS LIST	Plessey Peripheral Systems		CODE IDENT NO.	52648	PARTS LIST NO.	PL703160-100	REV LTR	A
			SH	4				

NOTE	QTY REQD	PART OR IDENTIFYING NO.	NOMENCLATURE OR DESCRIPTION	SPECIFICATION	CODE IDENT NO.	ZONE	F I N D N O.	S Y M	C/I USAGE
	4	SN74LS00	I.C./QUAD 2-INPUT POS-NAND GATES	T.1.			14		
	4	SN74S00	I.C./QUAD 2-INPUT POS-NAND GATES				15		
	3	SN74LS02	I.C./QUAD 2-INPUT POS-NOR GATES				16		
	2	SN74S02	I.C./QUAD 2-INPUT POS-NOR GATES				17		
	3	SN74LS04	I.C./HEX INVERTERS				18		
	2	SN74S04	I.C./HEX INVERTERS				19		
	3	SN74S08	I.C./QUAD 2-INPUT POS-AND GATES				20		
	2	SN74S10	I.C./TRIPLE 3-INPUT POS-NAND GATES				21		
	1	SN74LS11	I.C./TRIPLE 3-INPUT POS-AND GATES				22		
	1	SN74LS30	I.C./8-INPUT POS-NAND GATES				23		
	1	SN74LS32	I.C./QUAD 2-INPUT POS-OR GATES				24		
	1	SN74S32	I.C./QUAD 2-INPUT POS-OR GATES	T.1.			25		
							26		

The information hereon is the property of PLESSEY PERIPHERAL SYS. Transmittal receipt or possession of the information does not comply, license, or imply any rights to use, sell, or manufacture from this information and no reproduction or publication of it, in whole or in part, shall be made without written authorization from PLESSEY PERIPHERAL SYS.

Form 000087
 SIZE B
 CODE IDENT NO. 52648
 DWG NO. PL 703160-100
 SCALE REV A
 SHEET 1 OF 2

PARTS LIST		Plessey Peripheral Systems		CODE IDENT NO.	PARTS LIST NO.	SH	REV	C/I USAGE											
				52648	PL703160-100	5	A												
NOTE	QTY REQD	PART OR IDENTIFYING NO.	NOMENCLATURE OR DESCRIPTION	SPECIFICATION	CODE IDENT NO.	ZONE	F I N D	S Y M	C/I CODE	INT ON HAND	P A R	UNIT COST							
	2	SN74LS74	I.C. DUAL D-TYPE POS-EDGE-TRIG F/F W/PRESET/CLEAR	T.I.			27												
	3	136000-038	I.C. QUAD 2-INPUT POS-NAND BUFFERS W/OC	.			28												
	6	SN74S74	I.C. DUAL D-TYPE POS-EDGE-TRIG F/F W/PRESET/CLEAR	T.I.			29												
	2	SN74S85	I.C. 4-BIT MAGNITUDE COMPARATORS				30												
	2	SN74S133	I.C. 13-INPUT POS-NAND GATES				31												
	1	SN74LS138	I.C. 3 TO 8 LINE DECODER / MULTIPLEXERS				32												
	-1	SN74LS157	I.C. QUAD 2-TO-1-LINE DATA SELECTORS / MULTIPLEXERS				33												
	6	SN74S157	I.C. QUAD 2-TO-1-LINE DATA SELECTORS / MULTIPLEXERS				34												
	2	SN74LS174	I.C. HEX D-TYPE F/F W/CLEAR				35												
							36												
	1	SN74LS175	I.C. QUAD D-TYPE F/F W/CLEAR				37												
	3	SN74LS193	I.C. SYNCHRONOUS 4-BIT UP/DOWN COUNTERS				38												
	5	SN74LS244	I.C. OCTAL BUFFERS / LINE DRIVERS / LINE RECEIVERS	T.I.			39												

PARTS LIST		Plessey Peripheral Systems		CODE IDENT NO.	PARTS LIST NO.	SH	REV	C/I USAGE											
				52648	PL703160-100	6	A												
NOTE	QTY REQD	PART OR IDENTIFYING NO.	NOMENCLATURE OR DESCRIPTION	SPECIFICATION	CODE IDENT NO.	ZONE	F I N D	S Y M	C/I CODE	INT ON HAND	P A R	UNIT COST							
							40												
	6	SN74S280	I.C. 9-BIT ODD/EVEN PARITY GENERATORS/CHECKERS	T.I.			41												
	7	SN74S373	I.C. OCTAL D-TYPE LATCHES	T.I.			42												
	3	SN74S374	I.C. OCTAL D-TYPE FLIP-FLOPS	T.I.			43												
	7	136021-381	I.C. QUAD NOR UNIFIED BUS RECEIVER				44												
	5	DS8641	I.C. QUAD UNIFIED BUS TRANSCEIVER	NATIONAL			45												
	28	93A25APC	I.C. TTL RAM	FAIRCHILD			46												
							47												
	1	RC07GF 471J	RESISTOR / 470Ω, ±5%, 1/4 W	MIL-R-11			48												
	1	RC07GF 470J	RESISTOR / 47Ω, ±5%, 1/4 W	MIL-R-11			49												
	1	RC07GF 101J	RESISTOR / 100Ω, ±5%, 1/4 W	MIL-R-11			50												
	1	RC07GF 151J	RESISTOR / 150Ω, ±5%, 1/4 W	MIL-R-11			51												
	3	RN55D 1780F	RESISTOR / 178Ω, ±1%, 1/8 W	MIL-R-10509			52												

PARTS LIST		Plessey Peripheral Systems		CODE IDENT NO.	PARTS LIST NO.	SH	REV	C/I USAGE											
				52648	PL703160-100	7	A												
NOTE	QTY REQD	PART OR IDENTIFYING NO.	NOMENCLATURE OR DESCRIPTION	SPECIFICATION	CODE IDENT NO.	ZONE	F I N D	S Y M	C/I CODE	INT ON HAND	P A R	UNIT COST							
	2	RC07GF 181J	RESISTOR / 180Ω, ±5%, 1/4 W	MIL-R-11			53												
	6	RC07GF 201J	RESISTOR / 200Ω, ±5%, 1/4 W	MIL-R-11			54												
	1	RN55D 3830F	RESISTOR / 383Ω, ±1%, 1/8 W	MIL-R-10509			55												
	9	RC07GF 102J	RESISTOR / 1KΩ, ±5%, 1/4 W	MIL-R-11			56												
	2	RC07GF 472J	RESISTOR / 4.7KΩ, ±5%, 1/4 W	MIL-R-11			57												
	1	761-1 -R1KΩ	RESISTOR MODULE / 1KΩ	CTS			58												
	1	750-81 -R1KΩ	RESISTOR MODULE / 1KΩ	CTS			59												
							60												
	1	CD15FD 101J03	CAPACITOR / 100PF, ±5%, 500V	CORNELL DUBILIER			61												
	1	CD15FD 221J03	CAPACITOR / 220PF, ±5%, 500V	CORNELL DUBILIER			62												
	2	CD15FD 471J03	CAPACITOR / 470PF, ±5%, 500V	CORNELL DUBILIER			63												
	37	CGA103EDZ	CAPACITOR / .01μf, +80% -20%, 50V	UNITRADE			64												
	6	150D685X 0035B2	CAPACITOR / 6.8μf, ±20%, 35V	SPRAGUE			65												

PARTS LIST		Plessey Peripheral Systems		CODE IDENT NO.	PARTS LIST NO.	SH	REV	C/I USAGE											
				52648	PL703160-100	8	A												
NOTE	QTY REQD	PART OR IDENTIFYING NO.	NOMENCLATURE OR DESCRIPTION	SPECIFICATION	CODE IDENT NO.	ZONE	F I N D	S Y M	C/I CODE	INT ON HAND	P A R	UNIT COST							
							66												
	2	TZB72-10	DELAY LINE	RHOMBUS INDUSTRIES			67												
							68												
	1	TZAI1-10	DELAY LINE	RHOMBUS INDUSTRIES			69												
							70												
	2	T8201	SWITCH	CONTROL SWITCH			71												
							72												
							73												
							74												
							75												
							76												
							77												
	REF	SD703160	SCHEMATIC DIAGRAM				78												

The information hereon is the property of PLESSEY PERIPHERAL SYS. Transmittal receipt or possession of the information does not imply license, or imply any rights to use, sell, or manufacture from this information and no reproduction or publication of it in whole or in part, shall be made without written authorization from PLESSEY PERIPHERAL SYS.

Form 000087

SIZE **B** SCALE

CODE IDENT NO. 52648

DWG NO. PL 703160-100

REV A SHEET 2 OF 2

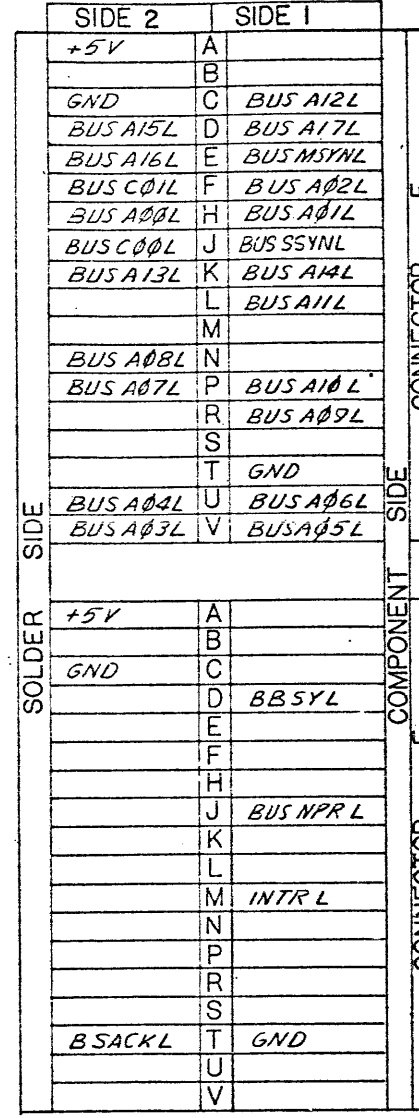
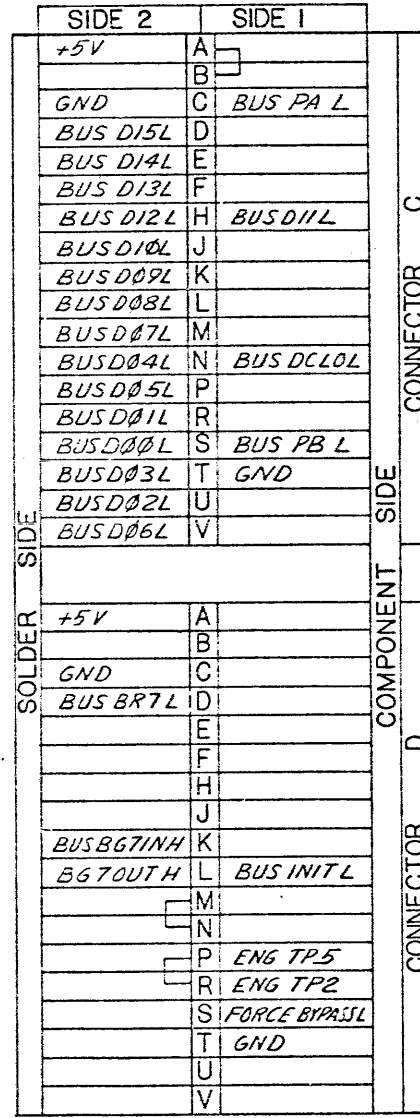
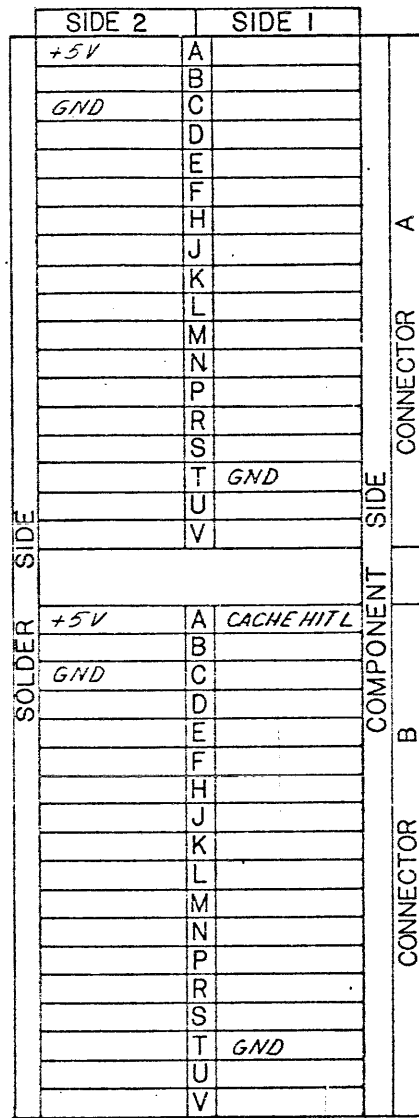
The information herein is the property of PLESSEY MICROSYSTEMS. Transmittal receipt or possession of this information does not constitute, in whole or in part, any license, or any other rights to use, sell, or manufacture from this information and no reproduction or publication of it, in whole or in part, shall be made without written authorization from PLESSEY MICROSYSTEMS.

REVISIONS				
ZONE	LTR	DESCRIPTION	DATE	APPROVED
A		REL TO PROD EO 3084	8-7-77	<i>[Signature]</i>

LAST REFERENCE DESIGNATION USED	
RESISTOR	R22
CAPACITOR	C47
INTEGRATED CIRCUIT	U119
DIODE	CR1
DELAY LINE	DL3
SWITCH	S2

REFERENCE DESIGNATION NOT USED	
INT CKT	U15, 50

REF DESIG.	GATES USED PER TOTAL	PART NUMBER
U8	5/6	74504
U27	1/4	74508
U44	3/4	136000-038
U56	2/4	74LS02
U77	2/4	74508
U81	4/6	74LS04
U88	5/6	74LS04
U105	3/4	74LS02
U118	3/4	74LS32



JI		
AMUX 10H	A B	BA07(1)H
AMUX 11H	C D	GND
AMUX 00H	E F	BA10(1)H
AMUX 08H	H J	GND
AMUX 02H	K L	VBA06(1)H
START TRAN L	M N	GND
AMUX 01H	P R	GND
TRI STATE AMUX L	S T	BA09(1)H
AMUX 05H	U V	VBA01(1)H
AMUX 09H	W X	GND
AMUX 04H	Y Z	BA03(1)H
AMUX 06H	AA BB	GND
AMUX 14H	CC DD	VBA02(1)H
PROC INIT L	EE FF	VBA04(1)H
GND	HH JJ	AMUX 13H
AMUX 15H	KK LL	AMUX 07H
VBA03(1)H	MM NN	AMUX 12H
GND	PP RR	
GND	SS TT	AMUX 03H
VBA05(1)H	UU VV	GND

- 5. CAPACITOR VALUES ARE MICROFARADS.
- 4. RESISTOR VALUES ARE IN OHMS, $\pm 5\%$, $1/4W$.
- 3. DESIGNATIONS SHOWN IN PARENTHESIS INDICATES WHERE SIGNAL ORIGINATES OR TERMINATES.

(2/B3)
 ZONE DESIGNATION
 SHEET NUMBER

- 2. SIGNALS SHOWN IN RECTANGLES ARE I/O CONNECTIONS.

AAI
 BOARD SIDE
 PIN DESIGNATION
 CONNECTOR DESIGNATION

1. FOR ASSEMBLY DRAWING SEE 703160.

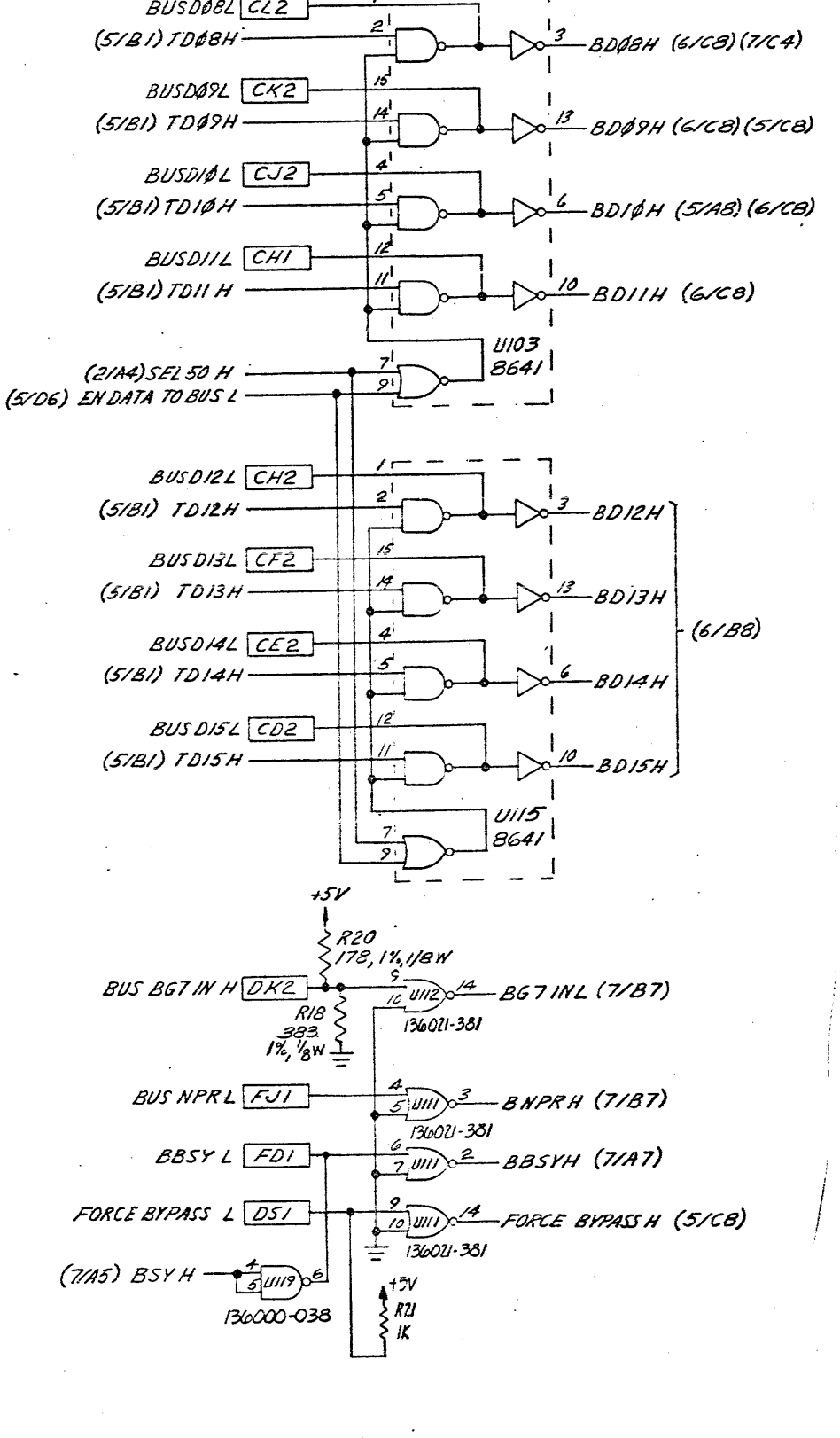
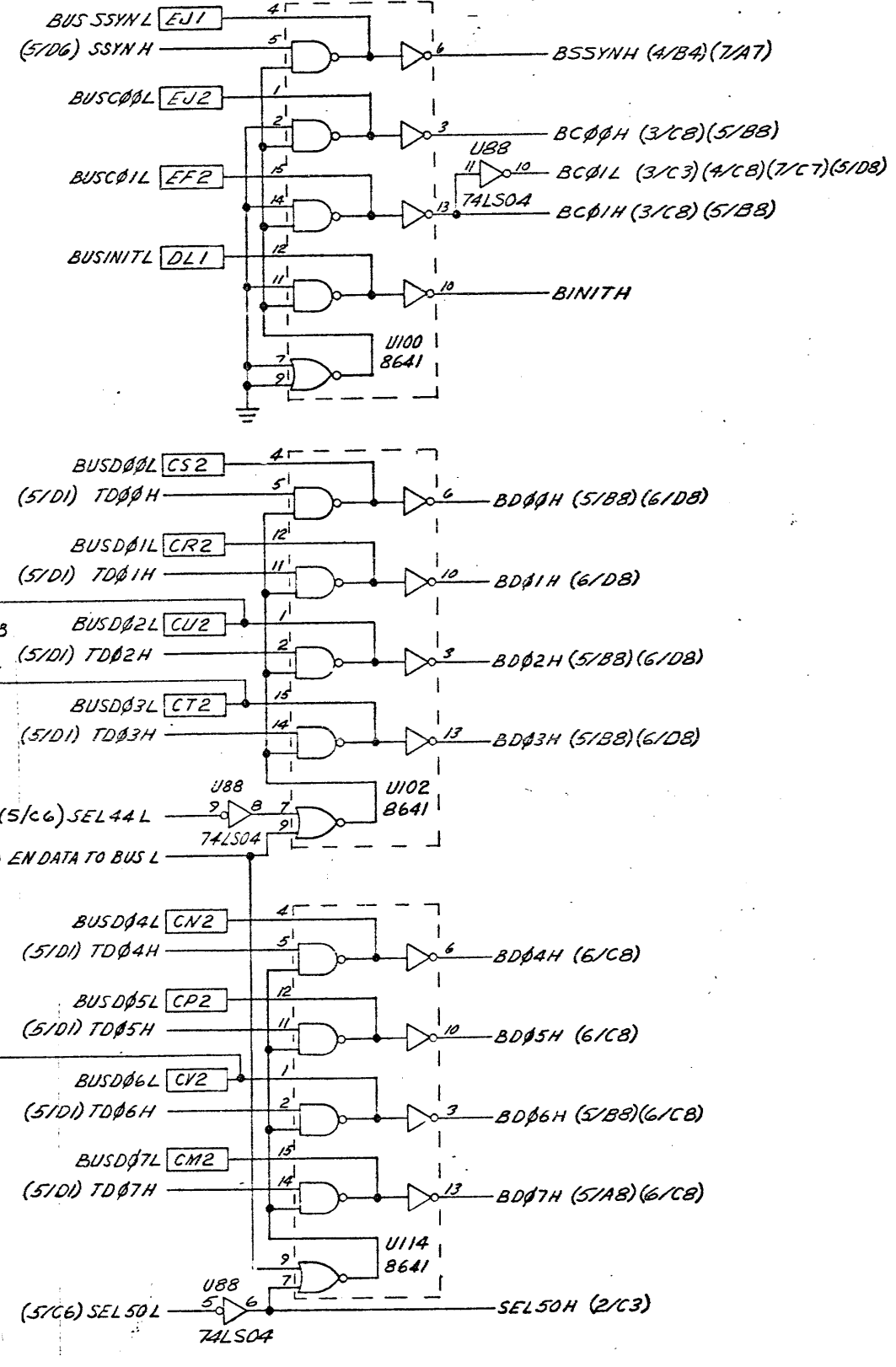
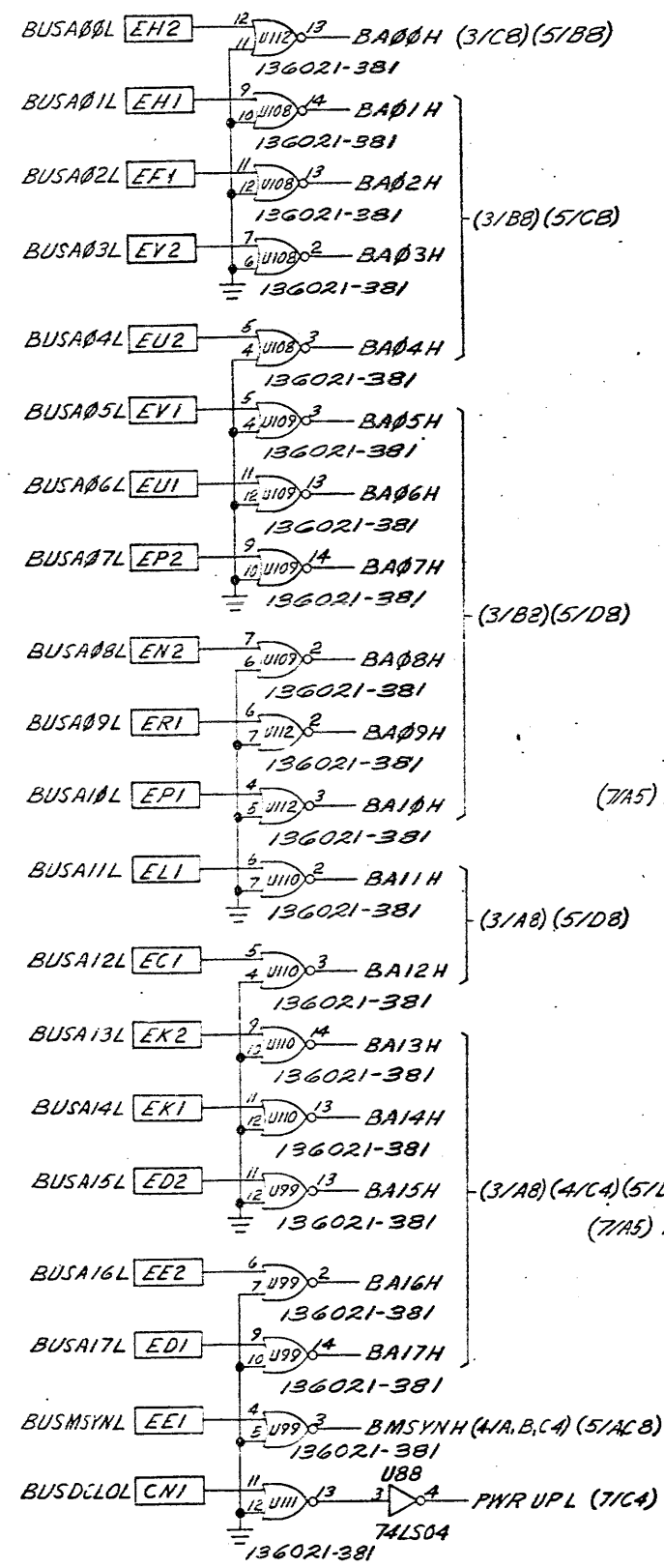
NOTES: UNLESS OTHERWISE SPECIFIED:

PRODUCTION RELEASE

PART/ASSY NO. & QTY PER ASSY		PARTS LIST		SPEC/SOURCE		CODE IDENT NO.		FIND NO.	
PART/ASSY REV LTR		CONTRACT NO.		DRAWN <i>[Signature]</i> 12-14-76		DWG TITLE SCHEMATIC DIAGRAM		5	
703160-N5-PM-KK11		Plessey Microsystems		CHECK <i>[Signature]</i> 12-14-76		CACHE MEMORY		4	
NEXT ASSY USED ON		PROJ. ENGR		ENGR <i>[Signature]</i> 12-14-76		PM-KK11		3	
APPLICATION		PROD. DESIGNER <i>[Signature]</i> 12-14-76		OTHER		SIZE CODE IDENT NO. DWG NO.		2	
		APPROVALS		SCALE		D 52648 SD703160		1	
						SHEET 1 OF 11		DIST NO. 19a 9e0 15	

The information herein is the property of PLESSEY PERIPHERAL SYS. Transmittal hereof or possession of the information does not confer, license, or imply any rights to use, sell or manufacture from this information and no reproduction or publication of it, in whole or in part, shall be made without written authorization from PLESSEY PERIPHERAL SYS.

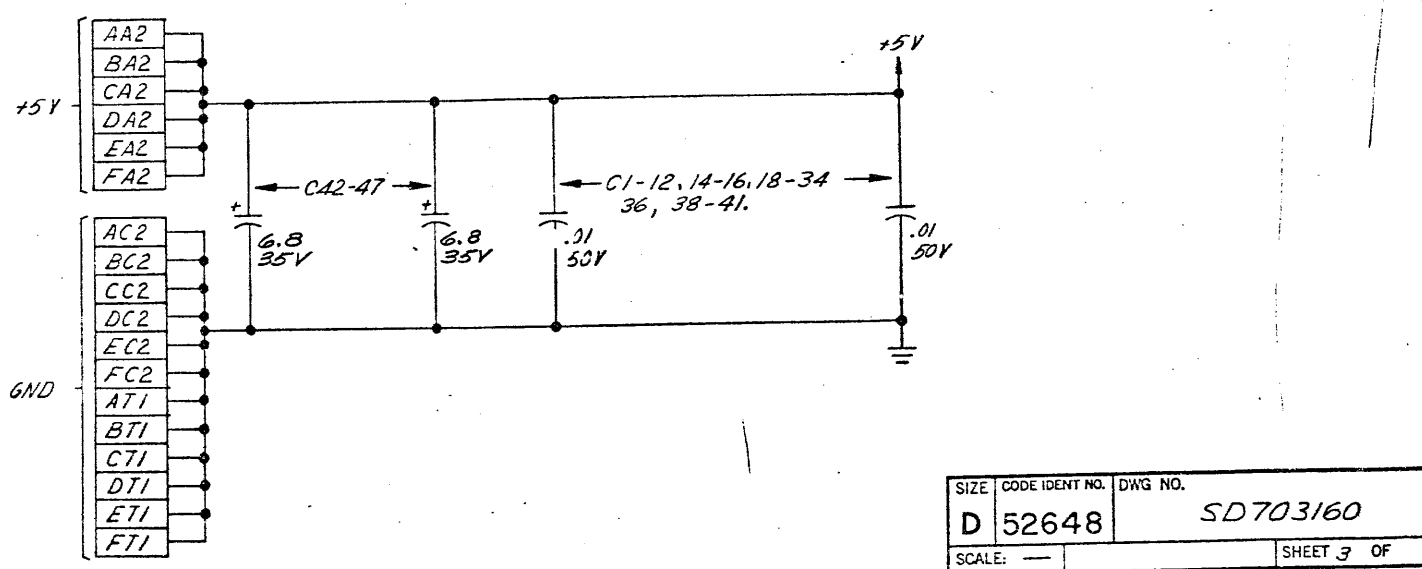
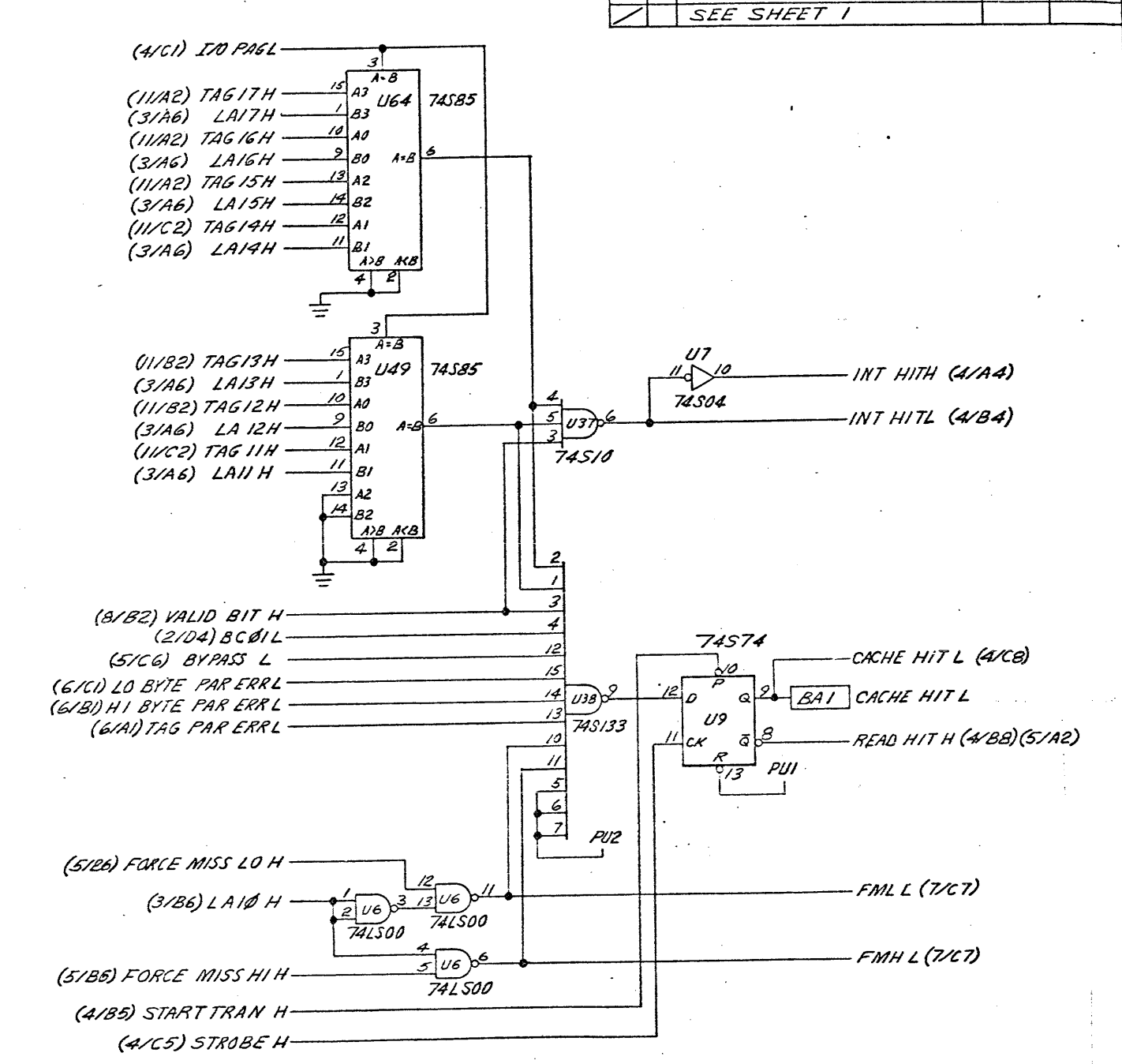
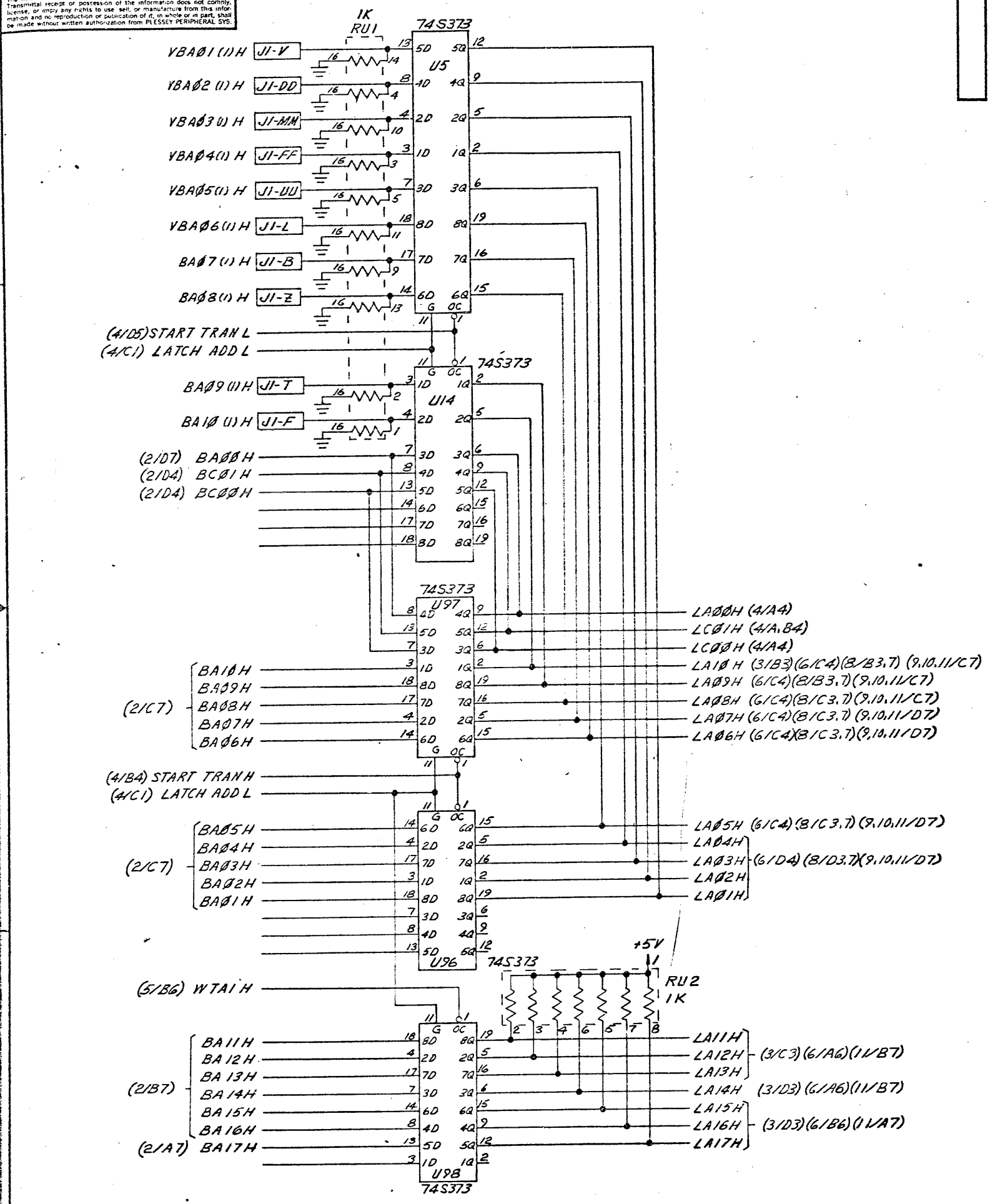
REVISIONS				
ZONE	LTR	DESCRIPTION	DATE	APPROVED
/		SEE SHEET 1		



SIZE	CODE IDENT NO.	DWG NO.
D	52648	SD703160
SCALE:	SHEET 2 OF	
	DISTR NO.	

REVISIONS				
ZONE	LTR	DESCRIPTION	DATE	APPROVED
		SEE SHEET 1		

The information herein is the property of PLESSEY PERIPHERAL SYS. Transmittal receipt or possession of the information does not constitute, or imply any rights to use, sell, or manufacture from this information and no reproduction or publication of it, in whole or in part, shall be made without written authorization from PLESSEY PERIPHERAL SYS.

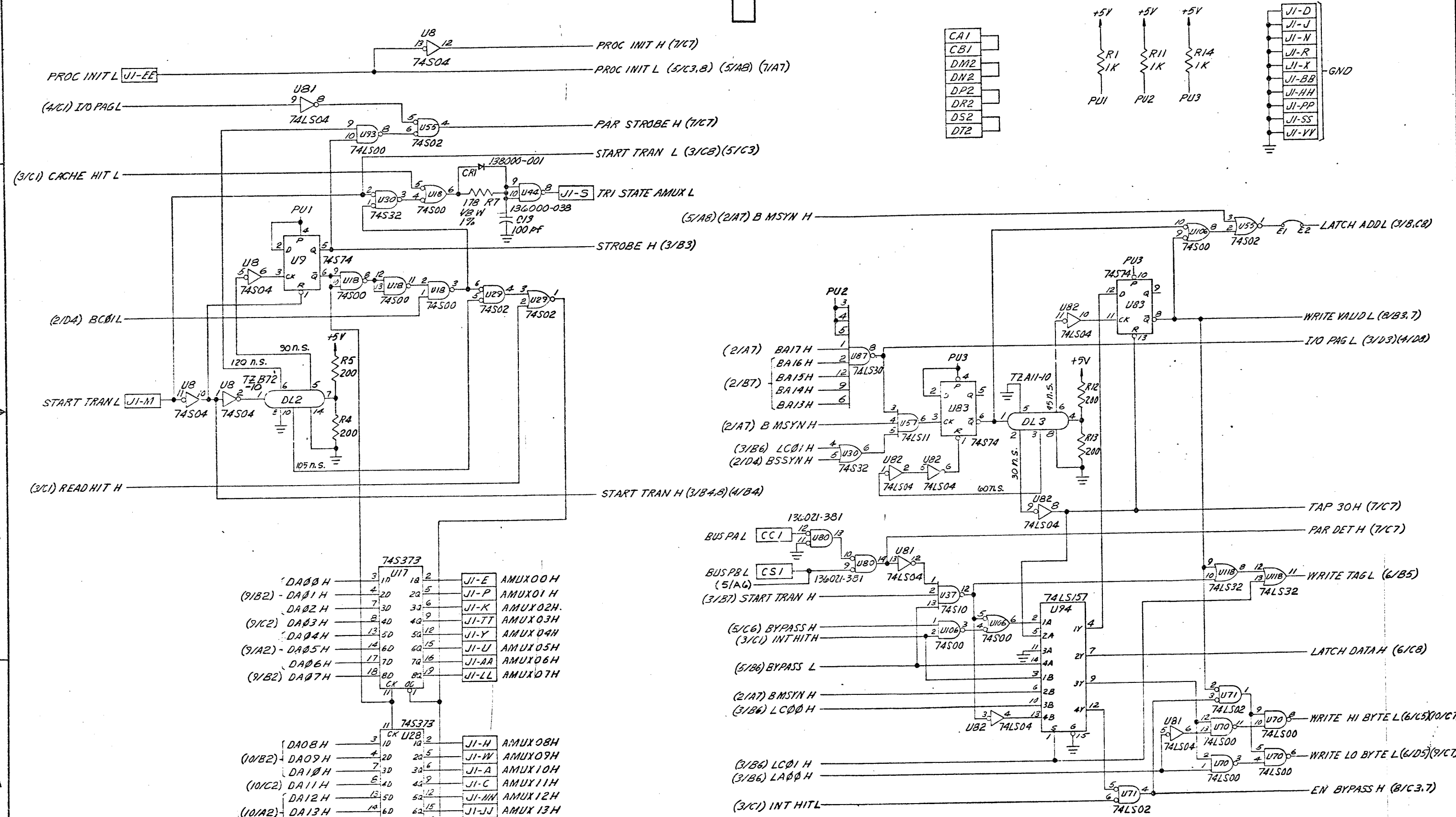


SIZE	CODE IDENT NO.	DWG NO.
D	52648	SD703160
SCALE:		SHEET 3 OF

D
C
A
B
A
A
GENERAL DSS
NO. 2214
A

The information herein is the property of PLESSEY PERIPHERAL SYS. Transmittal receipt or possession of the information does not imply, license, or give any rights to use, sell, or manufacture from this information and no reproduction or publication of it, in whole or in part, shall be made without written authorization from PLESSEY PERIPHERAL SYS.

REVISIONS				
ZONE	LTR	DESCRIPTION	DATE	APPROVED
		SEE SHEET 1		

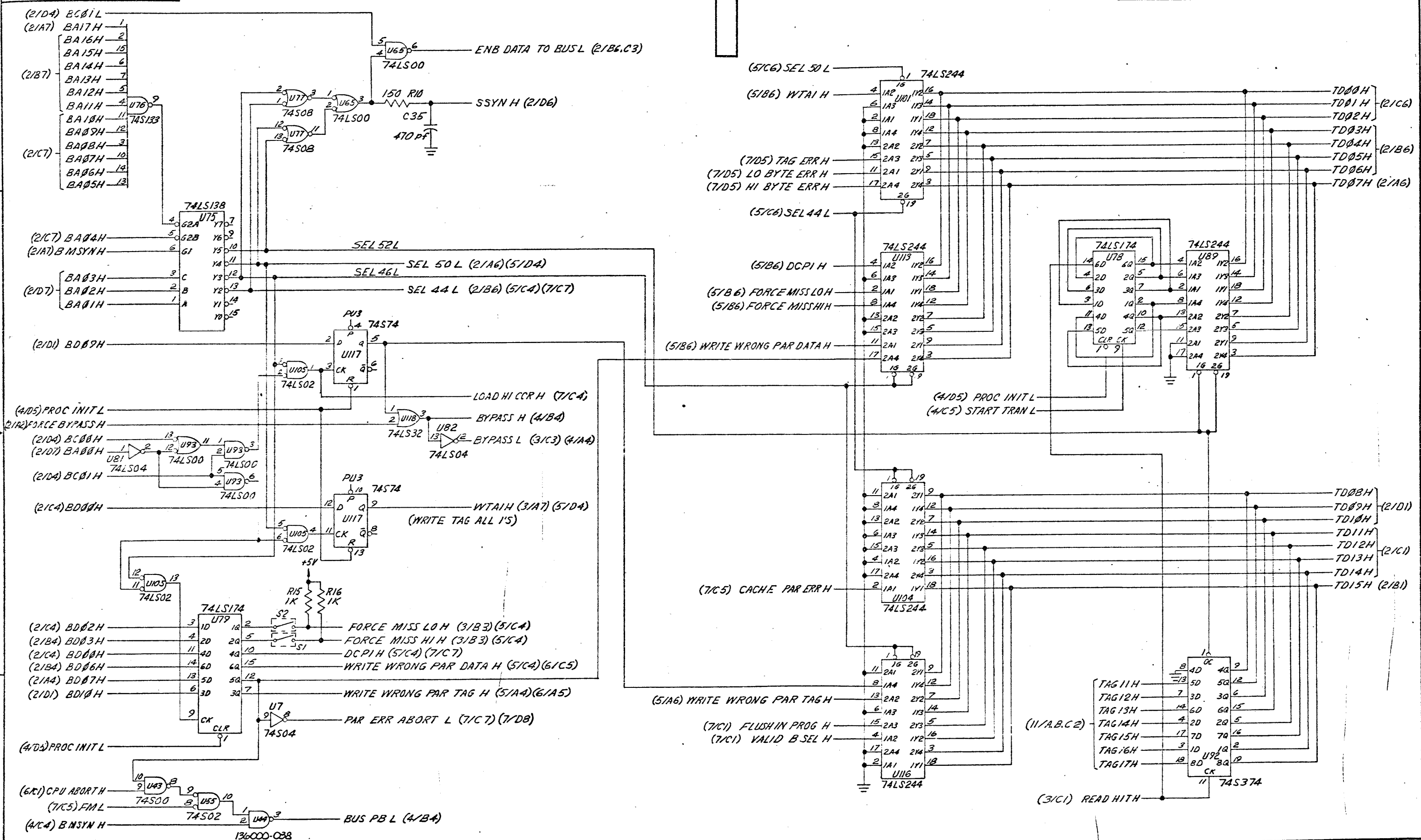


74LS373 U17		74LS373 U28	
DA00H	3	DA08H	3
(9/B2) - DA01H	4	DA09H	4
DA02H	7	DA10H	7
(9/C2) DA03H	8	(10/C2) DA11H	8
DA04H	13	DA12H	13
(9/A2) - DA05H	14	(10/A2) DA13H	14
DA06H	17	DA14H	17
(9/B2) DA07H	18	DA15H	18
	19		19
	20		20
	21		21
	22		22
	23		23
	24		24
	25		25
	26		26
	27		27
	28		28
	29		29
	30		30
	31		31
	32		32
	33		33
	34		34
	35		35
	36		36
	37		37
	38		38
	39		39
	40		40

SIZE	CODE IDENT NO.	DWG NO.
D	52648	SD703160
SCALE:	SHEET 4 OF	
	DISTR NO.	

The information herein is the property of PLESSEY PERIPHERAL SYS. Transmittal, receipt or possession of the information does not imply license, or any rights to use, sell, or manufacture from this information and no reproduction or publication of it, in whole or in part, shall be made without written authorization from PLESSEY PERIPHERAL SYS.

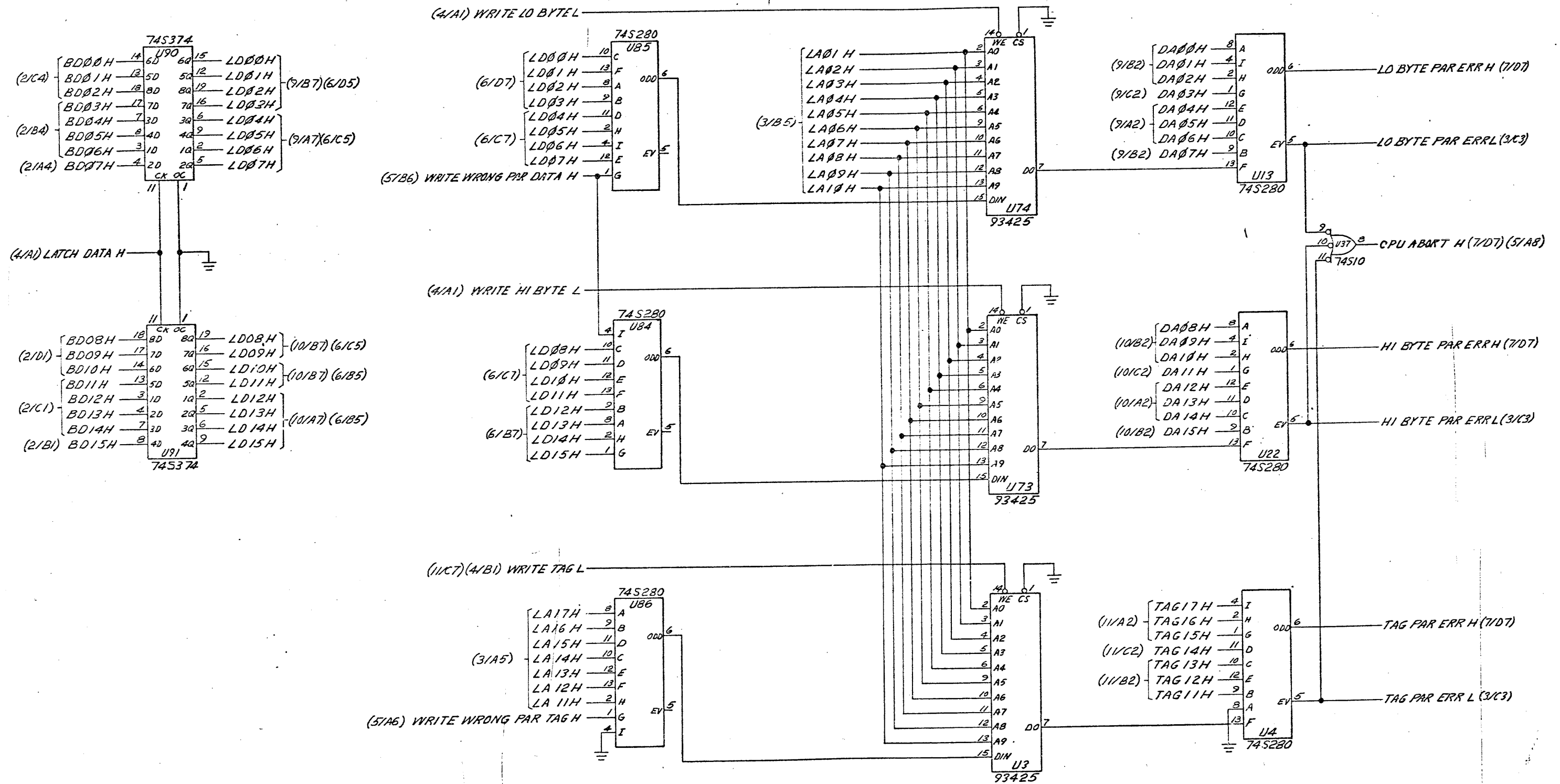
REVISIONS				
ZONE	LTR	DESCRIPTION	DATE	APPROVED
/		SEE SHEET 1		



SIZE	CODE IDENT NO.	DWG NO.
D	52648	SD703/60
SCALE	SHEET 5 OF 11	
DISTR NO.		

The information herein is the property of PLESSEY PERIPHERAL SYS. Transmittal, receipt or possession of the information does not constitute license, or imply any rights to use, sell, or manufacture from the information and no reproduction or publication of it, in whole or in part, shall be made without written authorization from PLESSEY PERIPHERAL SYS.

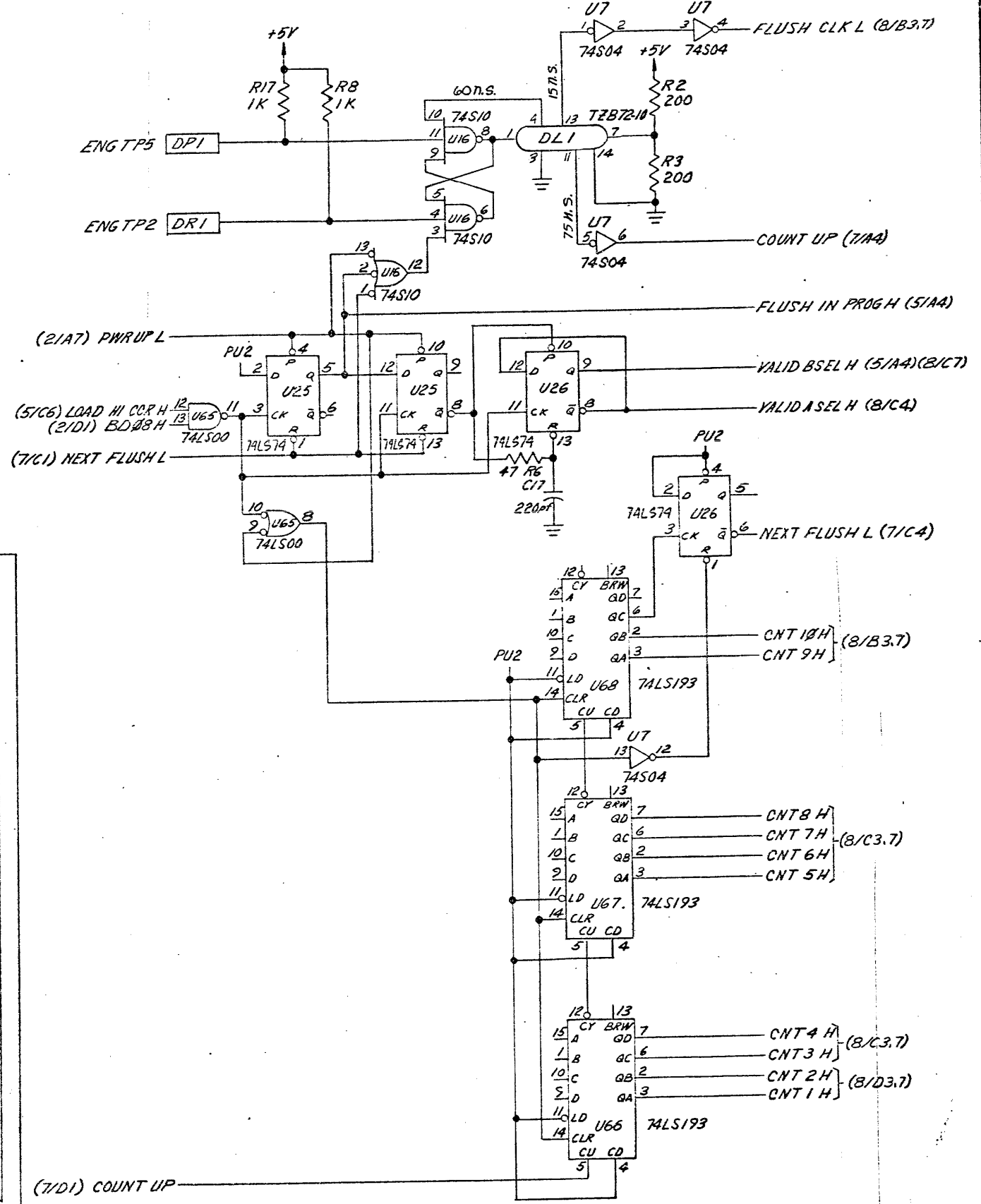
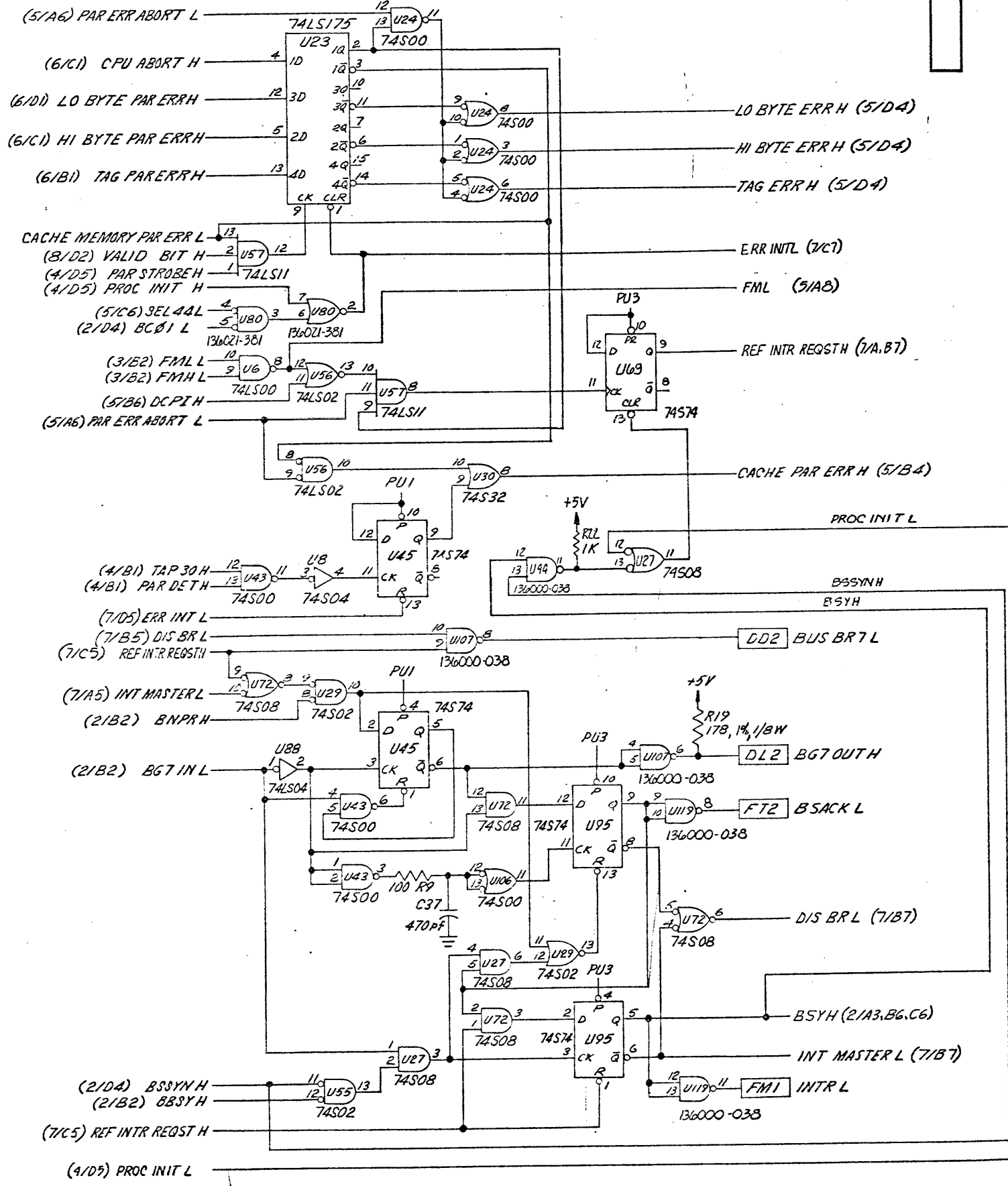
REVISIONS				
ZONE	LTR	DESCRIPTION	DATE	APPROVED
/		SEE SHEET 1		



SIZE	CODE IDENT NO.	DWG NO.
D	52648	SD703160
SCALE: —	SHEET 6 OF	
DISTR NO.		

The information herein is the property of PLESSEY PERIPHERAL SYS. Transmittal, receipt or possession of the information does not imply license, or any rights to use, sell, or manufacture from this information and no reproduction or publication of it, in whole or in part, shall be made without written authorization from PLESSEY PERIPHERAL SYS.

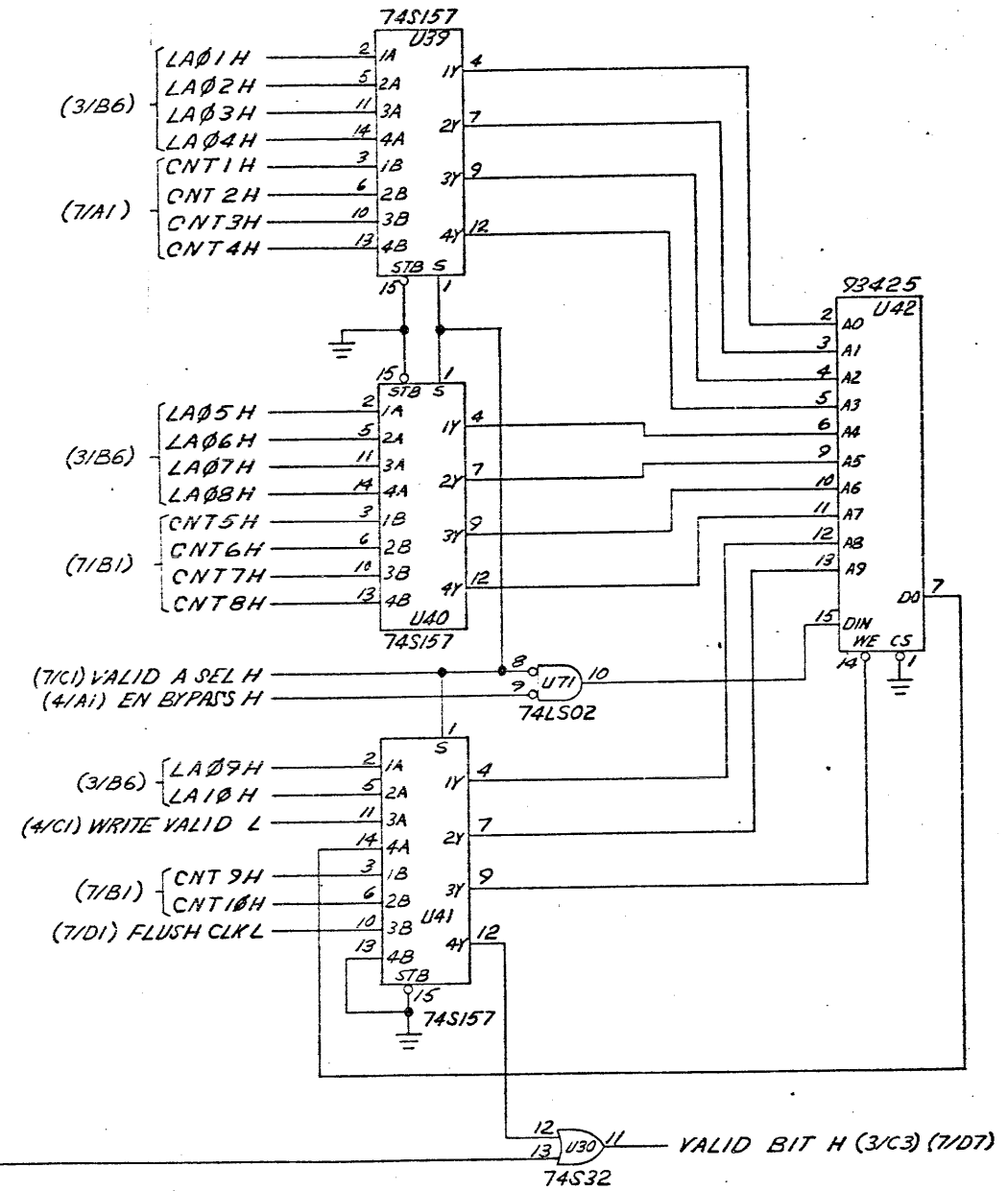
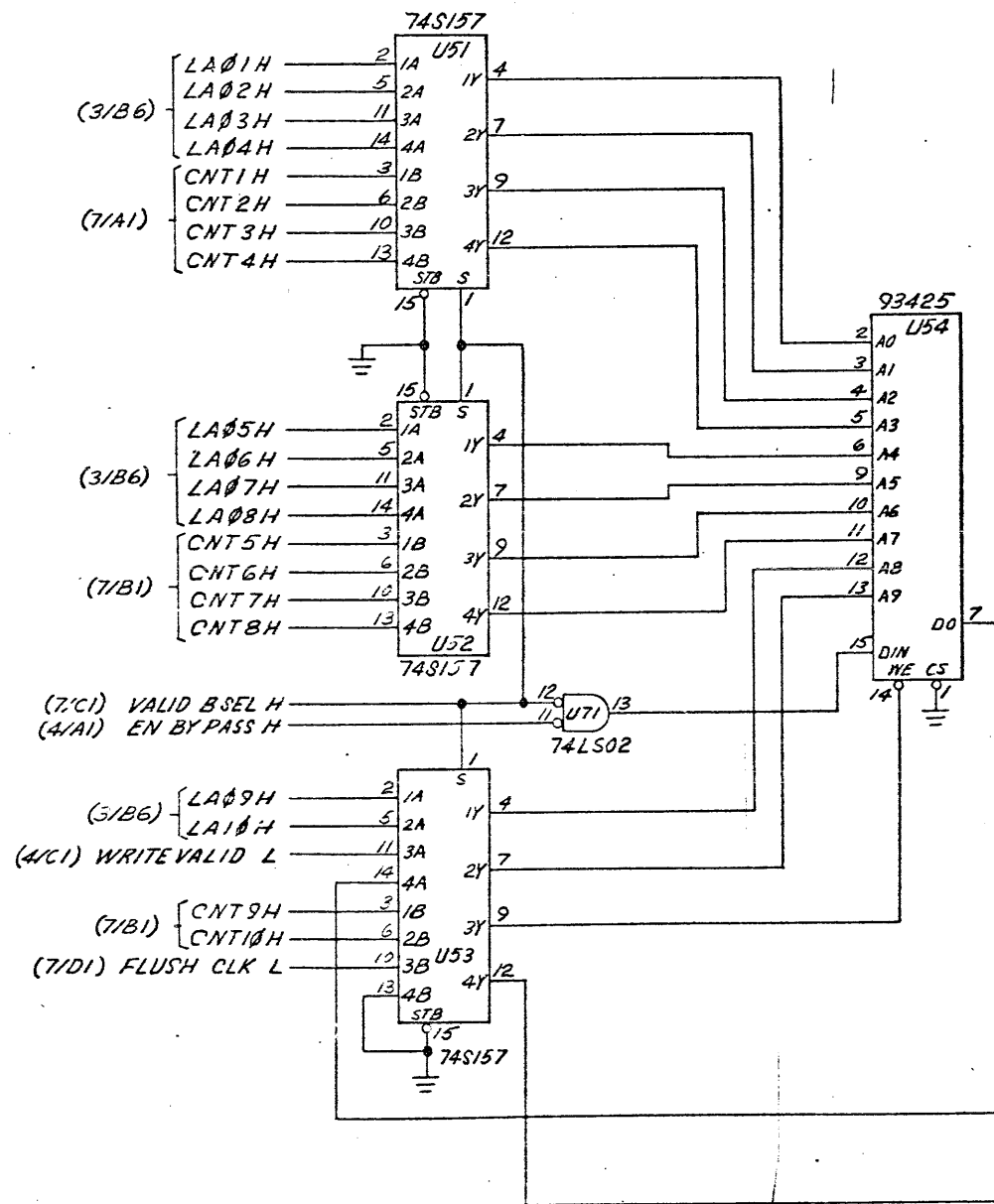
REVISIONS		DATE	APPROVED
ZONE	LTR	DESCRIPTION	
		SEE SHEET 1	



SIZE	CODE IDENT NO.	DWG NO.
D	52648	SD703160
SCALE:	1	SHEET 7 OF
		DISTR NO.

The information herein is the property of PLESSEY PERIPHERAL SYS. Transmittal receipt or possession of the information does not imply license, or any rights to use, sell, or manufacture from the information and no reproduction or publication of it, in whole or in part, shall be made without written authorization from PLESSEY PERIPHERAL SYS.

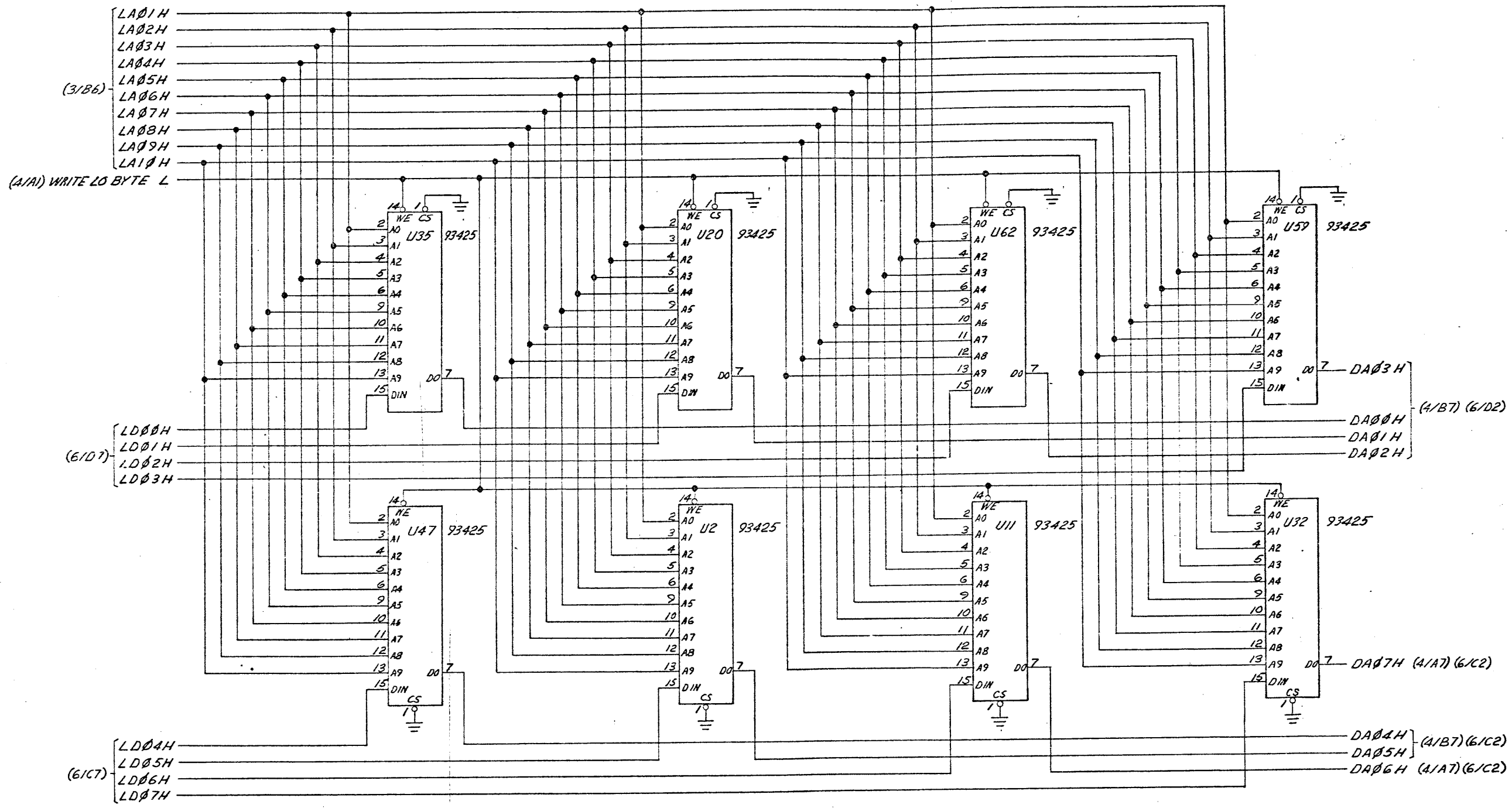
REVISIONS				
ZONE	LTR	DESCRIPTION	DATE	APPROVED
/		SEE SHEET 1		



SIZE	CODE IDENT NO.	DWG NO.
D	52648	SD703160
SCALE: —	SHEET 8 OF	
		DISTR NO.

The information herein is the property of PLESSEY PERIPHERAL SYS. Transmittal, receipt or possession of the information does not constitute, license, or imply any rights to use, sell, or manufacture from this information and no reproduction or publication of it, in whole or in part, shall be made without written authorization from PLESSEY PERIPHERAL SYS.

REVISIONS				
ZONE	LTR	DESCRIPTION	DATE	APPROVED
/		SEE SHEET 1		



(A1A) WRITE LO BYTE L

(61D7)

(61C7)

(4/B7) (6/D2)

(4/A7) (6/C2)

(4/B7) (6/C2)

(4/A7) (6/C2)

SIZE	CODE IDENT NO.	DWG NO.
D	52648	SD703160
SCALE:	SHEET 9 OF	
	DISTR NO.	

D

C

B

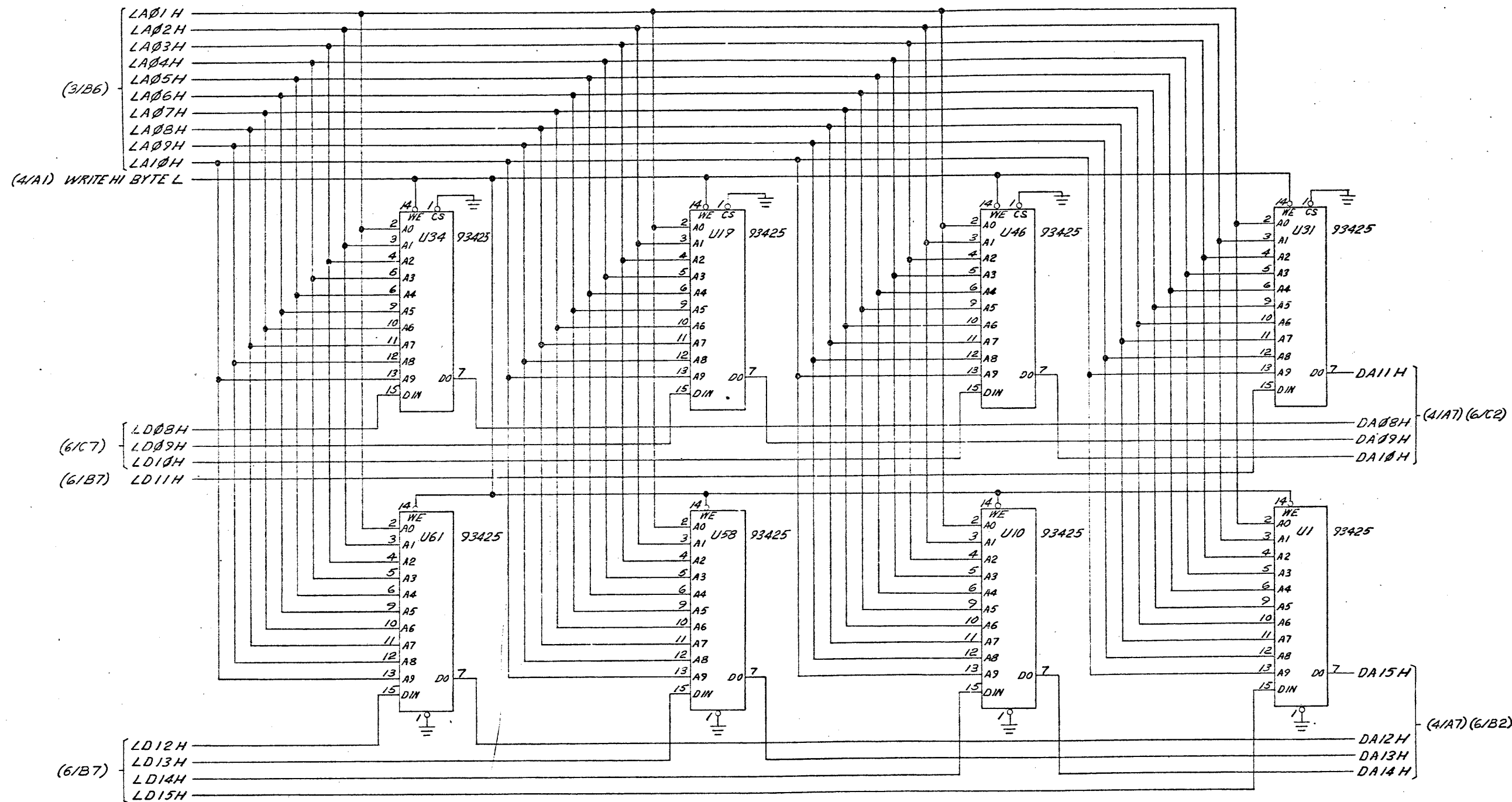
A

A

SD703160

The information herein is the property of PLESSEY PERIPHERAL SYS
 Transmittal receipt or possession of the information does not comply,
 license, or imply any rights to use, sell, or manufacture from this infor-
 mation and no reproduction or publication of it, in whole or in part, shall
 be made without written authorization from PLESSEY PERIPHERAL SYS.

REVISIONS				
ZONE	LTR	DESCRIPTION	DATE	APPROVED
/		SEE SHEET 1		



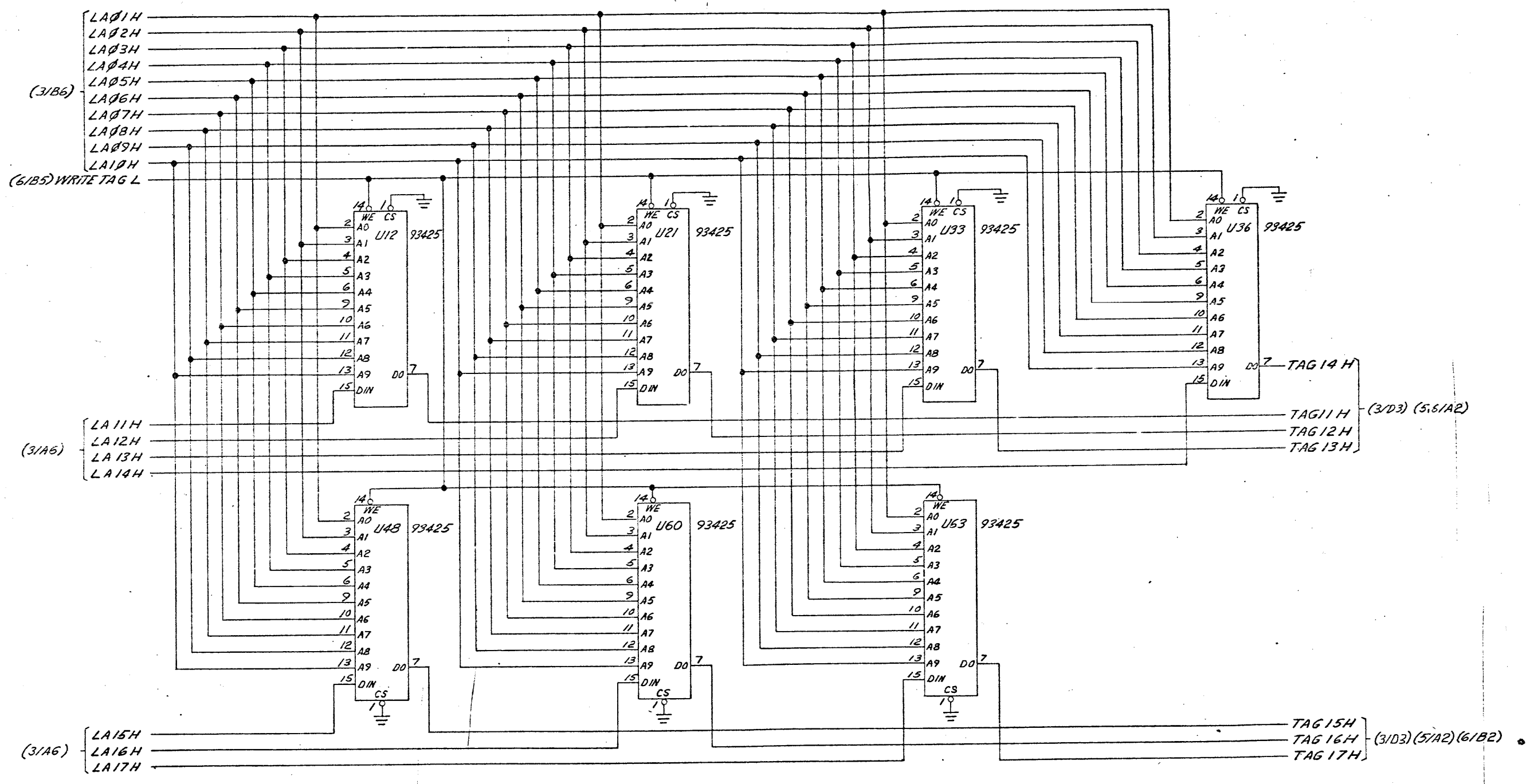
SIZE	CODE IDENT NO.	DWG NO.
D	52648	SD703160
SCALE:	SHEET 10 OF	
DISTR NO.		

SD703160

A

The information herein is the property of PLESSEY PERIPHERAL SYS. This data receipt or possession of the information does not comply, for use, or imply any rights to use, sell, or manufacture from this information and no reproduction or publication of it, in whole or in part, shall be made without written authorization from PLESSEY PERIPHERAL SYS.

ZONE		LTR		DESCRIPTION	DATE	APPROVED
				SEE SHEET 1		

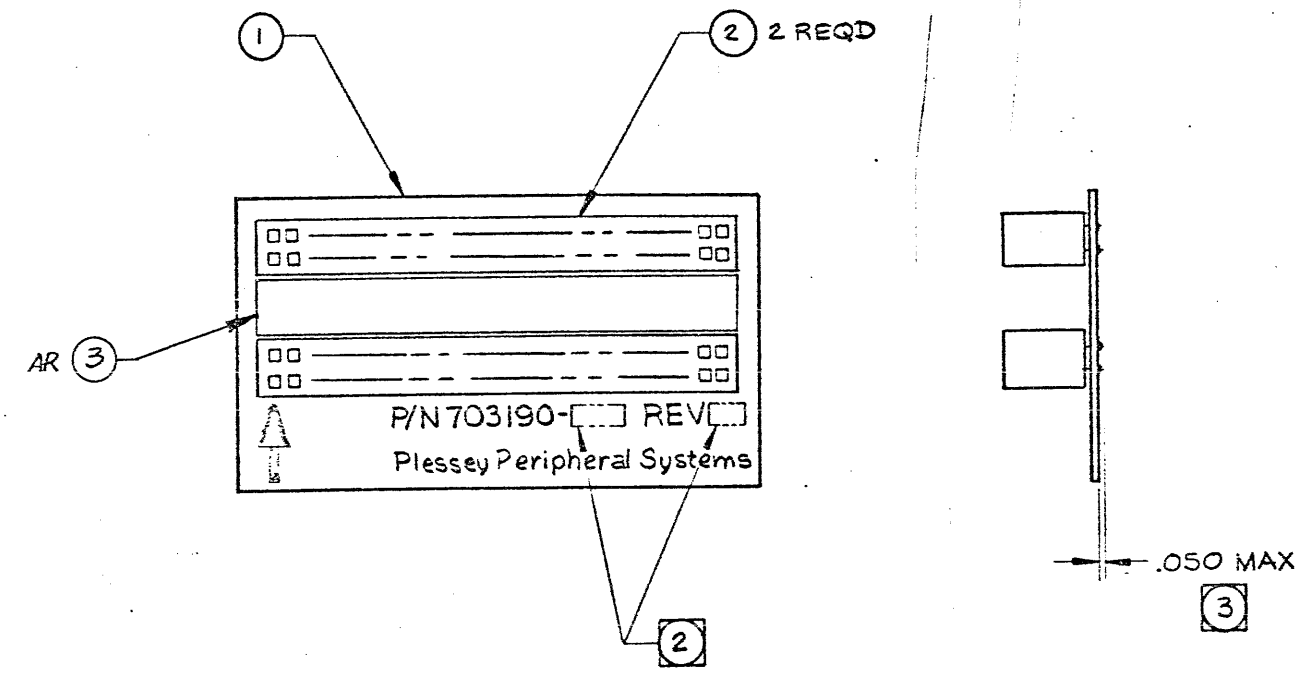


SIZE	CODE IDENT NO.	DWG NO.
D	52648	SD703160
SCALE:	SHEET 11 OF	
	DISTR NO.	

The information hereon is the property of PLESSEY PERIPHERAL SYS. Transmittal receipt or possession of the information does not comply, license, or imply any rights to use, sell, or manufacture from this information and no reproduction or publication of it, in whole or in part, shall be made without written authorization from PLESSEY PERIPHERAL SYS.

REVISIONS				
ZONE	LTR	DESCRIPTION	DATE	APPROVED
/	A	REL TO PROD E03087	7-18-78	22A [Signature]

703190



PRODUCTION RELEASE

PART/ASSY NO. & QTY PER ASSY	PARTS LIST	SPEC/SOURCE	CODE IDENT NO.	FIND NO.
X	FOR PARTS LIST SEE PL703190-100			1
-100	NOTE PART OR IDENTIFYING NO.			

- ③ COMPONENT LEAD TRIM AND SOLDER BUILD-UP TO BE AS NOTED.
- ② MARK ASSEMBLY VERSION NUMBER AND REVISION LETTER WITH .12 HIGH CHARACTERS USING BLACK INK PER MIL-M-13231, GROUP III. LOCATION APPROXIMATELY AS SHOWN.
- 1. ASSEMBLE AND INSPECT PER WORKMANSHIP STANDARDS MANUAL.

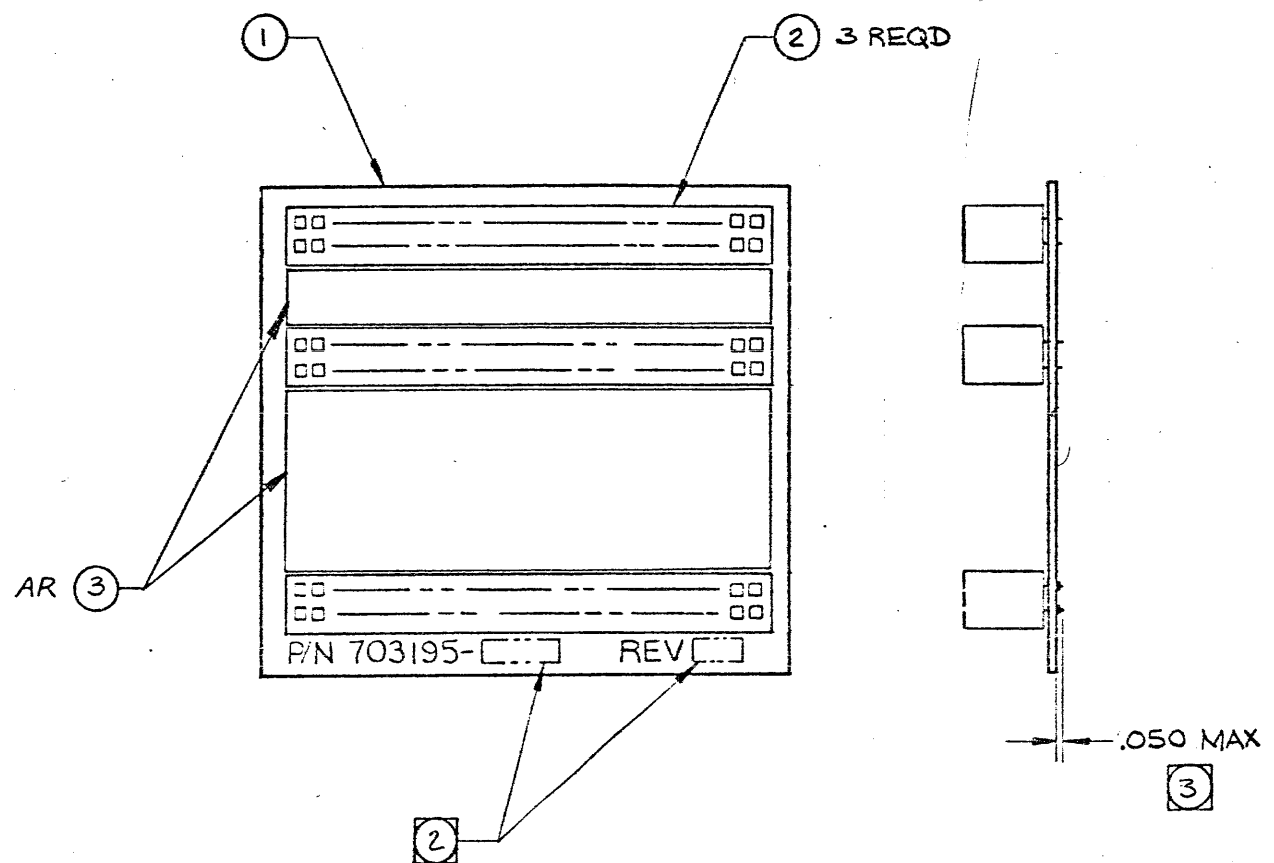
NOTES: UNLESS OTHERWISE SPECIFIED

PART/ASSY REV LTR		DO NOT SCALE DRAWING		CONTRACT NO.		Plessey Peripheral Systems	
		SCREW THREADS PER HANDBOOK H-28		DRAWN <i>Y. Nakayama</i> 7 DEC 78		DWG TITLE	
		COUNTERBORE AND SPOTFACE FILLET RADII TO BE .010 MAXIMUM		CHECK <i>[Signature]</i> 12-8-78		BOARD ASSEMBLY	
		REMOVE ALL BURRS AND BREAK SHARP EDGES EQUIVALENT TO .010R		ENGR <i>[Signature]</i> 12-8-78		JUMPER BOARD, 2 CONNECTOR	
		ROUGHNESS OF MACHINED SURFACES 125 PER USAS B46.1		PROJ. ENGR		PM-KK11	
		STANDARD HOLE TOLERANCE PER AND 10387		PROD. DESIGN <i>[Signature]</i> 12-1-78		SIZE	CODE IDENT NO.
		TOLERANCES ON: XX = ±.03 XXX = ±.010 ANGLES = ±9°30'		OTHER		C	52648
		INTERPRET DIMENSIONS AND TOLERANCES PER USAS Y14.5		APPROVALS		DWG NO.	703190
		DIMENSIONS ARE IN INCHES AND APPLY AFTER HEAT TREAT AND FINISH UNLESS OTHERWISE SPECIFIED				SCALE: 2/1	SHEET 1 OF 1
-100	PM-KK11	APPLICATION				DISTR NO. 12347018	

The information herein is the property of PLESSEY PERIPHERAL SYS. Transmittal receipt or possession of the information does not comply, license, or imply any rights to use, sell, or manufacture from this information and no reproduction or publication of it, in whole or in part, shall be made without written authorization from PLESSEY PERIPHERAL SYS.

REVISIONS				
ZONE	LTR	DESCRIPTION	DATE	APPROVED
/	A	REL TO PROD EO 3087	7-18-79	[Signature]

703195



PRODUCTION RELEASE

- ③ COMPONENT LEAD TRIM AND SOLDER BUILD-UP TO BE AS NOTED.
- ② MARK ASSEMBLY VERSION NUMBER AND REVISION LETTER WITH .12 HIGH CHARACTERS USING BLACK INK PER MIL-M-13231, GROUP III. LOCATION APPROXIMATELY AS SHOWN
- 1. ASSEMBLE AND INSPECT PER WORKMANSHIP STANDARDS MANUAL.

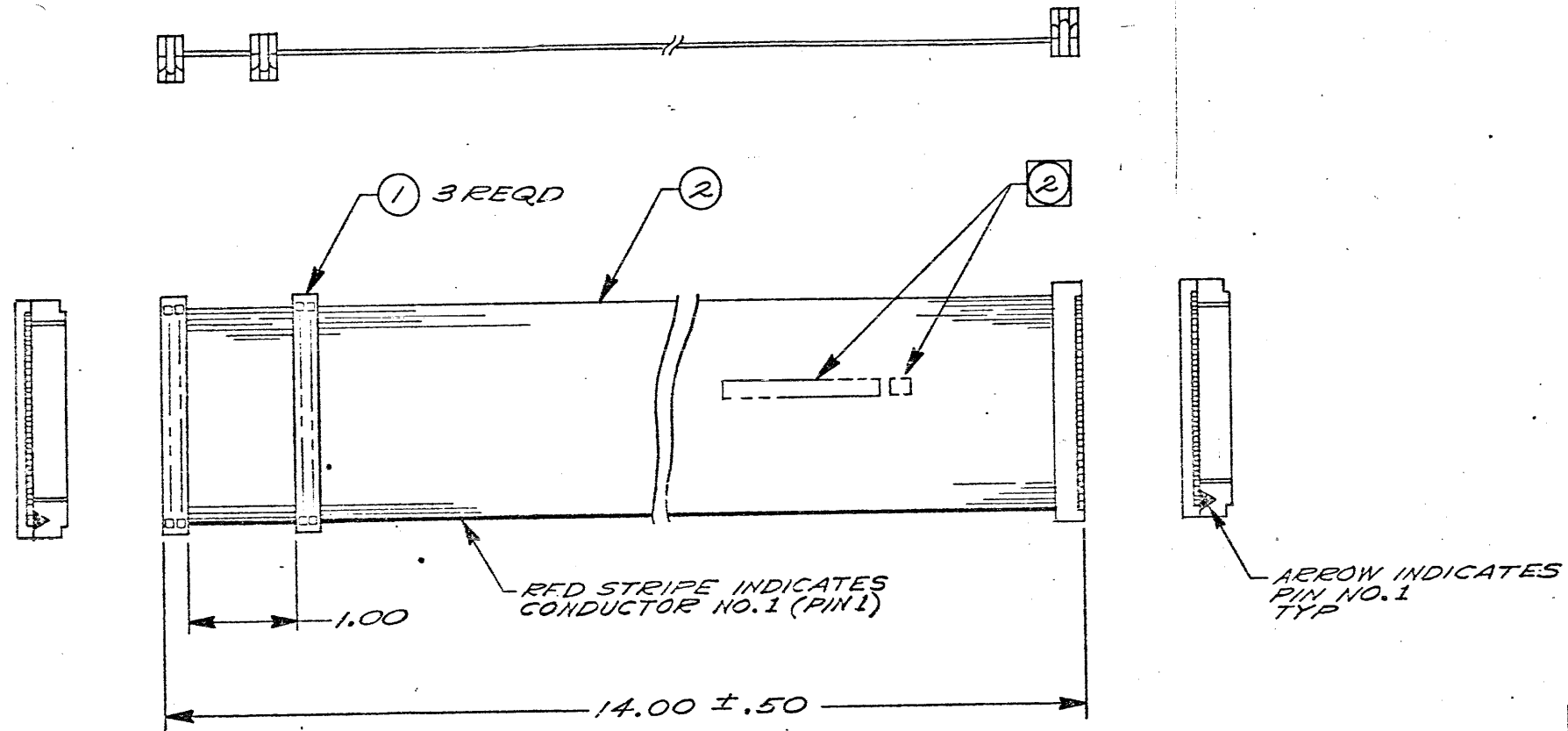
NOTES: UNLESS OTHERWISE SPECIFIED

PART/ASSY NO. & QTY PER ASSY		PARTS LIST		CONTRACT NO.	Plessey Peripheral Systems
PART NO.	QTY	PART/ASSY REV LTR	DESCRIPTION		
-100		PM-KK11	DO NOT SCALE DRAWING		BOARD ASSEMBLY JUMPER BOARD, 3 CONNECTOR PM-KK11
			SCREW THREADS PER HANDBOOK H-28		
			COUNTERBORE AND SPOTFACE FILLET RADIUS TO BE .015 MAXIMUM		DRAWN: <i>[Signature]</i> 7 DEC 78 CHECK: <i>[Signature]</i> 12-5-78 ENGR: <i>[Signature]</i> 12-8-78 PROJ. ENGR PROD. DESIGN: <i>[Signature]</i> 12-8-78
			REMOVE ALL BURRS AND BREAK SHARP EDGES EQUIVALENT TO .015"		SIZE: C CODE IDENT NO.: 52648 DWG NO.: 703195
			ROUGHNESS OF MACHINED SURFACES 125/ PER USAS 346.1		SCALE: 2/1 SHEET 1 OF 1
			STANDARD HOLE TOLERANCE PER AND 10387		DISTR NO. 12347018
			TOLERANCES ON: XX = ± .03 XXX = ± .019 ANGLES = ± 9°30'		
			INTERPRET DIMENSIONS AND TOLERANCES PER USAS Y14.5		
			DIMENSIONS ARE IN INCHES AND APPLY AFTER HEAT TREAT AND FINISH UNLESS OTHERWISE SPECIFIED		

The information hereon is the property of PLESSEY PERIPHERAL SYS. Transmittal receipt or possession of the information does not comply, license, or imply any rights to use, sell, or manufacture from this information and no reproduction or publication of it, in whole or in part, shall be made without written authorization from PLESSEY PERIPHERAL SYS.

701784

REVISIONS				
ZONE	LTR	DESCRIPTION	DATE	APPROVED
/	A	REL TO PROD EO 3087	7-10-73	ESL JY



PRODUCTION RELEASE

VERSION NO. & QTY REQD PER VERSION	NOTE	PART OR IDENTIFYING NO.	NOMENCLATURE OR DESCRIPTION / MATERIAL	SPEC/SOURCE	CODE IDENT NO.	FIND NO.
	X		FOR PARTS LIST SEE PL701784-100			1
	-100					5
						4
						3
						2

VERSION NO. & QTY REQD PER VERSION		DO NOT SCALE DRAWING		CONTRACT NO.			
VERSION REV LTR		SCREW THREADS PER HANDBOOK H-28		DRAWN <i>Tom Casey</i> 2-8-79			
		COUNTERBORE AND SPOTFACE FILLET RADII TO BE .013 MAXIMUM		CHECK <i>L. Hinkle</i> 2-8-79		CABLE ASSEMBLY, MAINTENANCE, PM-KK11A	
		REMOVE ALL BURRS AND BREAK SHARP EDGES EQUIVALENT TO .012R		ENGR <i>Paul G. Jones</i> 2-9-79		SIZE CODE IDENT NO. DWG NO.	
		ROUGHNESS OF MACHINED SURFACES 125/ PER USAS B46.1		PROJ. ENGR		C 52648 701784	
		STANDARD HOLE TOLERANCE PER AND 10387		PROD. DESIGN		SCALE: 1/1 SHEET 1 OF 1	
		TOLERANCES ON: .XXX ± .03 .XXX ± .010 ANGLES ± 0° 30'		DOC CONT. <i>Paul G. Jones</i> 2-12-79		DISTR NO. 123470 IC	
		INTERPRET DIMENSIONS AND TOLERANCES PER USAS Y14.5		OTHER APPROVALS			
		DIMENSIONS ARE IN INCHES AND APPLY AFTER HEAT TREAT AND FINISH					
		UNLESS OTHERWISE SPECIFIED					
-100 FINAL PM-KK11A							
VER NO. NEXT ASSY MODEL							
FIRST USED ON							

(2) MARK ASSEMBLY NUMBER AND REVISION LETTER WITH .12 HIGH CHARACTERS USING BLACK INK PER MIL-M-13231, GROUP III. LOCATION APPROX AS SHOWN.

1. ASSEMBLE AND INSPECT PER WORKMANSHIP STANDARDS MANUAL.

NOTES: UNLESS OTHERWISE SPECIFIED

DWG NO. 701784