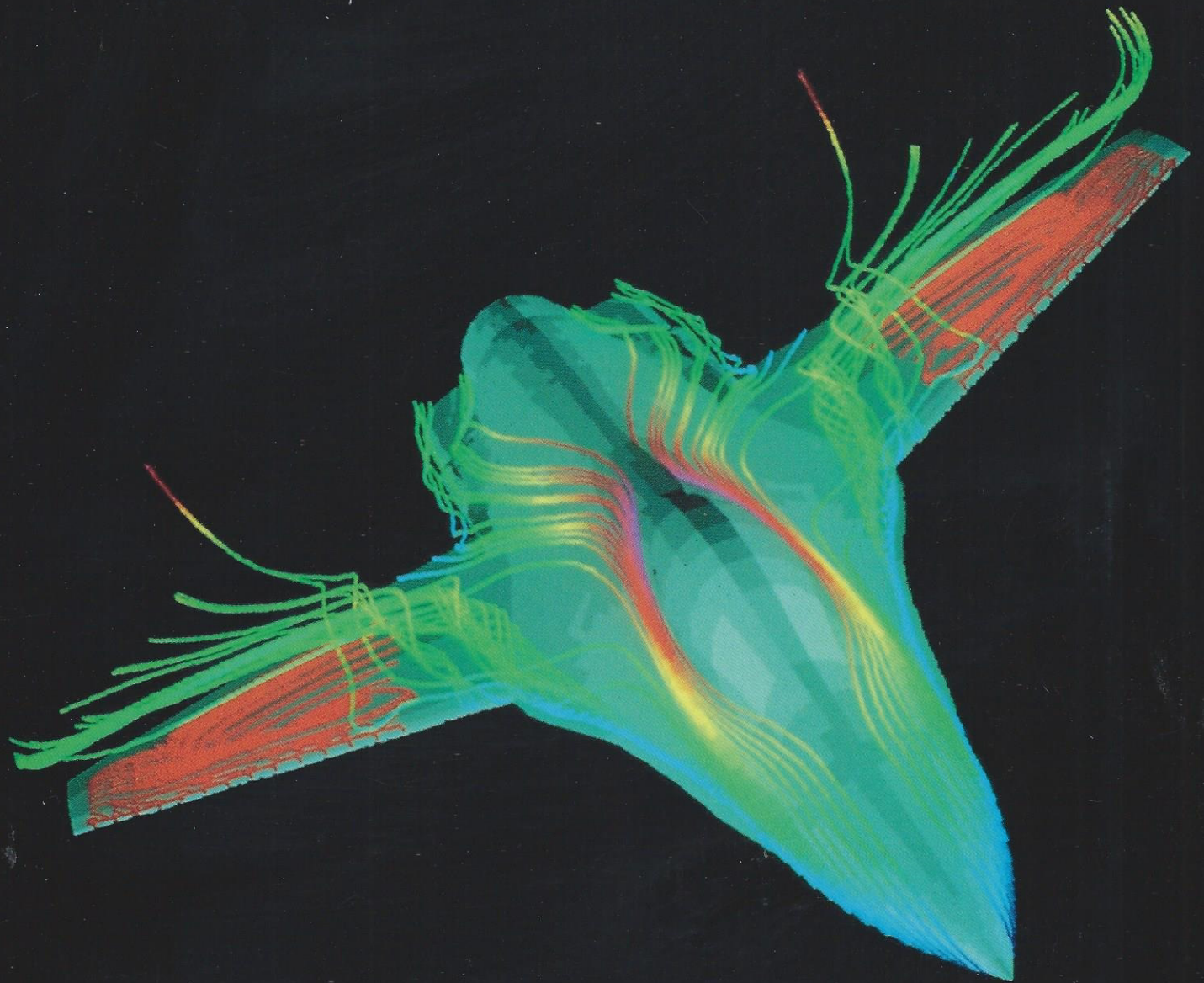


# Applications Software For Cray Supercomputers

---



---

July, 1987

**CRAY**

---

# Applications Software Available for Cray Sup

## Structural and Mechanical Engineering

ABAQUS  
 ADAMS™  
 ADINA®  
 ADS  
 ADS/NASOPT  
 ANSYS®  
 AQUADYN  
 AQWA  
 ARGUS  
 ARI/RANDOM  
 ASAS  
 ASAS-HEAT  
 ASAS-NL  
 ASAS-OFFSHORE  
 ASKA™  
 BACCHUS  
 BASEPLATE  
 BEASY™  
 BOPACE3D  
 CASTEM  
 COPEs  
 COSMIC/NASTRAN-CSAR  
 COSMIC/NASTRAN-RPK  
 CSA/NASTRAN  
 DECICE  
 DIAL  
 DIODORE  
 DRPIPE  
 DYCAST/GC  
 DYNA2D  
 DYNA3D  
 DYNAFLEX®  
 DYNAPLOUS  
 DYNAPO 4  
 EISI/EAL  
 ENDURE  
 FACTS  
 FATCON  
 FIGURES II  
 FLUENT™  
 FRAME  
 HONDO2  
 IDMS  
 IMP  
 ISOCROS  
 LUSAS  
 MAGNA  
 MARC™  
 MAXTRAN79  
 MAZE  
 MENTOR

MODULEF  
 MOVIE.BYU  
 MSC/NASTRAN  
 MULTI-TRITIR  
 MULTIFLEX  
 MULTIFLEXSG  
 NIKE2D  
 NIKE3D  
 NISA II  
 NISAOPT  
 NOAMAS  
 NPS OPTIM  
 NUPIPE-II  
 OPTDES.BYU  
 PAFEC-FE®  
 PAM-CRASH  
 PATRAN II  
 PDE/PROTRAN  
 PENGST™  
 PERMAS®  
 PIPANL  
 PIPELINER  
 PIPESD  
 PIPESTRESS  
 PIPESUP  
 PIPLIN  
 PISCES  
 PISCES 2DELK™  
 PISCES 3DELK™  
 PISCES-PIPE  
 PR2D  
 PR3D  
 RADJA  
 SAP  
 SEPS  
 SESAM  
 SIMFLEX-II  
 SINDA/1987/ANSI  
 SPACE  
 STAAD®  
 STARDYNE®  
 STARS  
 STARSTRUC  
 STIFFPLATE  
 TACO3D  
 TAURUS  
 TMG  
 TOPAZ  
 WECAN  
 WESPLAT  
 WESTDYN  
 WESTDYN, General  
 Post-Processors

WESTDYN, TIME, HISTORY  
 WESTOP  
 ZPIPE

## Electronics and Electrical Engineering

AOS/MAGNETIC™  
 AOS/MAGNUM™  
 FEAP  
 GREENFIELD™  
 HSPICE  
 IGSPICE  
 NCA/DVS™  
 NEMOS  
 PRECISE  
 SALT™  
 SPICE-GT  
 SPICE  
 UM-SPICE

## Nuclear Engineering and Power

ADIOS  
 ADLIB  
 ANISN-W  
 ASPECTW  
 BASEPLATE  
 BARMOM  
 CLASIX-3  
 COBRA41  
 COCO  
 CORA-II  
 CRAB 2  
 CRAC 2  
 DANDE  
 DIF3D  
 DOT  
 DOTIII-W  
 DYNAPO 4  
 EGAD-W  
 FACTW  
 FATHOM360, FATHOM360S  
 FORM-W  
 FRAME  
 FTD  
 GAMLEG-W  
 HAL-1987  
 HECTR  
 LISA  
 LOCTA-IV  
 LOFRAN  
 LOTIC II

MCNP  
 MORSE-CG  
 MORSE-CGA  
 NAGS  
 NORDOS  
 NOTRUMP  
 NUCLIB  
 ONEDANT  
 OPERLIM  
 OPTOAX  
 ORIGEN  
 PDQ  
 RADTRAN3  
 REBUS3  
 RELAP5/MOD1  
 RELAP5/MOD2  
 SATAN VI  
 SCAP-II  
 SEP  
 SETS  
 SIMMER2  
 SORCERY  
 STAR  
 STIFFPLATE  
 TRAC-PF1/MOD1  
 TWODANT  
 TWOHEX  
 WREFLOOD

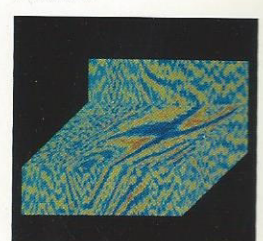
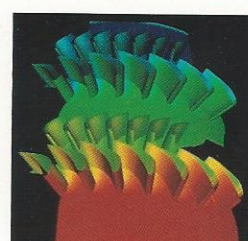
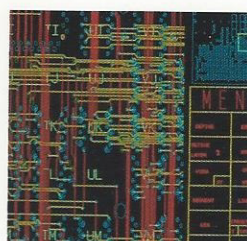
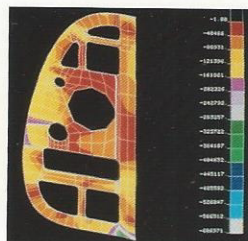
## Computational Fluid Dynamics

ADAPT 2D  
 ADAPT3D  
 APPL/3D  
 ARC2D  
 ARC3D  
 BACCHUS  
 BANGUP  
 CNS  
 CONCHAS-SPRAY  
 CONTINUSYS  
 EPPLER  
 FDL3D  
 FIDAP\*  
 FLO 27-42  
 FLO 52-67  
 FLOW3D  
 FLUENT™  
 FLUENT/BFC™  
 GRAPE  
 INCA/3D  
 INGRID  
 INS3D

ITCHVALVE  
 KIVA  
 MCAERO  
 NASA-VOF2D  
 NEKTON  
 NISA/FLUID  
 NLRAERO  
 OMNIPILOT  
 PANAIR  
 PHOENICS  
 PNOZ/2D  
 PNS  
 QUADPAN™  
 ROTOR  
 SALE3D  
 SCRAMIN  
 SIMP  
 SPEAR/3D  
 STREAM  
 TAIR  
 TAXI  
 TNS  
 TWING  
 TAP-A  
 TAWFIVE  
 THERST  
 VSAERO  
 WATCHEM  
 ZEUS/2D

## Petroleum

AQUADYN  
 AQWA  
 BIZPAK®  
 BLUEPACK-3D  
 CALTUB  
 CHEF  
 CHEMFLOOD™  
 COMPII™  
 CONING  
 DECICE  
 DISCO®  
 DYNAFLEX®  
 DYNAPLOUS  
 ECLIPSE  
 FRAGOR  
 GEOINT  
 GEOPAK  
 GEOSYS™  
 GEOVECTEUR  
 GIMAGE  
 HCOMP™  
 HEXTRAN®



# Supercomputers

HFS™  
HOT  
IDMS  
KRIGPAK  
MIMIC™  
MTRAN  
MULTI  
MULTI-TRITIR  
N-HANCE™  
PEPITE  
PIPEPHASE™  
PIPESD  
POMEVOL  
PROCESS™  
PVT  
PYROL  
Pre-stack Depth Migration  
QUIKLOG™  
QUIKRAY®  
QUIKSHOT®  
QUIKVSP®  
RADJA  
RASPAK  
RASPAC-C  
RAYMAP®  
RETORT  
SDL™  
SEISPAK  
SESAM  
SGL™  
SKS  
SLIPR  
SURFNET™  
TCON™  
TGNET™  
TGOPT™  
THERM™  
TLNET™  
TLOPT™  
TRITRICOMP  
UNIGKS  
VAPEUR  
VESPA™  
VIP®  
VIP®-COMP  
VIP®-GAS  
VIP®-MISC

## Chemical Engineering, Chemistry and Biotechnology

AMBER  
CASCADE

CECTRP  
CHARMM  
EQ3/6  
GAUSSIAN 82-86  
GRADSCF  
GROMOST™  
LAZY PULVERIX  
MADCAP  
MITHRIL  
MOLSCAT  
MOPAC  
RNAFOLD  
SHELXS-86  
TDC  
XTAL

## Miscellaneous Science and Engineering

BASSIN  
BREACH  
CNVUFAC/GRAY  
COULOMB, RSUM, GSUM  
CPOLXM  
DAMBRK  
DIFFUSE83  
DWOPER  
FEM3  
GEM2D  
HEC  
MAGNA/FEM  
MALAPROP  
MARK III™  
ODRIC  
PSPP  
QMESH  
ROFOS  
SPECTR3T  
THERMX  
TIMETABLE™

## Graphics and Imaging

ANLPS  
BIZPAK®  
CADSIM  
CGS  
CONTOURING SYSTEM  
CP-IMAGE  
CP-MAP  
CPS-1®  
CSADIE  
DD-PLOT  
DI-3000® EXTENDED

DISPLAY II  
DISSPLA®  
DP3D™  
EPIC  
GEOINT  
GEOPAK  
GHOST-80  
GIMAGE  
GINO  
GK-2000™  
GKSGRAL®  
GLDPLLOT  
GMOS  
GRAFL  
GRAFMAKER™  
ISSCO-GKS™  
KRIGPAK  
LANL-J501  
MAPPER  
ORION  
PI-PLOT  
PLOTLIB  
METAFILE SYSTEM  
MOVIE.BYU  
NCAR-GKS GRAPHICS LIBRARY  
NOVA\*GKS  
OASIS  
PRECISION VISUALS® TOOLS  
RASPAC  
RASPAC-C  
SD  
SEISPAK  
SKETCH  
SVDI  
TAURUS  
TECPLOT  
TEMPLATE®  
UPSON  
UNIGKS  
WAVEFRONT Dynamic Imaging System™

## Mathematics and Statistics

AMOSLIB  
BCSLIB MATH/STAT LIBRARY  
BENCHLIB  
BIMOND  
CISI MATHEMATICAL LIBRARY  
CRDEC

DASSL  
DSS/2  
EISPAK  
ELLIPTIC  
ELLIPACK  
FASCIMILE  
FITPACK  
GLIM  
HARWELL SUBROUTINE LIBRARY  
ICCG2-3  
IEEE SIGNAL PROCESSING PACKAGE  
ILUCG2-3  
IMSL Library  
ITMETH  
ITPACKV  
LINPACK  
LSODPK  
MATH ADVANTAGE®  
MATHEMATICAL SUBROUTINES  
NAG™ Library  
ODEPAK  
PORT  
POSSOL  
REDUCE  
SCILIB  
SCIPORT  
SLATEC  
SLAP  
SPARSPAK  
SPSS-X™  
TOEPLITZ  
VECTORPACK SUBROUTINE LIBRARY™

## Simulation and Mathematical Programming

ACSL  
ADS  
ARRIBA  
BATCHLP  
CADSIM  
COPES  
DIDSIM™  
EASY5 Engineering Analysis System  
FTD  
GRG2  
LAMPS

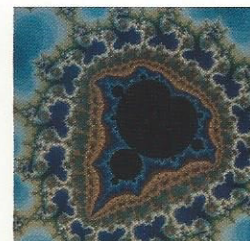
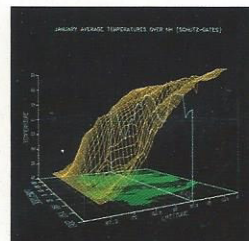
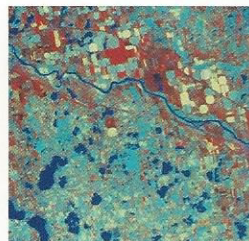
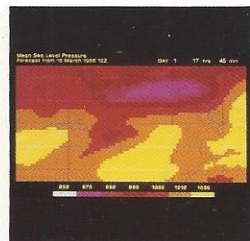
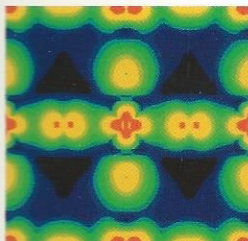
MADCAP  
MAP/1™  
MASSBAL MK II  
OPTDES.BYU  
PCGPAK, SMPAK  
SCICONIC/VM  
SEP  
SETS  
SIMAN  
SLAM II®  
TESS™  
XMP LIBRARY

## Languages, Data Management and Other Tools

BENCHMARKING UTILITIES  
CIVIC  
CREATABASE®  
CROSSREF  
DDT  
DMM  
FORGE™  
FUS  
HIERARCHY  
HISTORIAN® PLUS  
JAKEF  
LRSYS  
MAT  
PAT  
PRECOMP  
PROLOG  
PSL  
RATFOR  
READMS/WRTMS™  
RIOT  
RTIRIM  
SCIBENCH  
SIR/DBMS  
SLIB77  
SML  
SPSS-X™  
TRIXGL  
VAMGR™  
VAST®  
VAST®-2/Fortran 8x  
VISUAL BASE  
X910

## Other

BASELIB  
CTSSLINK, SED, PCSEND



# CRAY

---

**CRAY  
RESEARCH, INC.**

608 Second Avenue South  
Minneapolis, MN 55402  
612/333-5889  
Telex: 4991729

**Domestic sales offices**

Albuquerque, New Mexico  
Atlanta, Georgia  
Beltsville, Maryland  
Bernardsville, New Jersey  
Boston, Massachusetts  
Boulder, Colorado  
Chicago, Illinois  
Cincinnati, Ohio  
Colorado Springs, Colorado  
Dallas, Texas  
Darien, Connecticut  
Detroit, Michigan  
Houston, Texas  
Huntington Beach, California  
Huntsville, Alabama  
Laurel, Maryland  
Los Angeles, California  
Minneapolis, Minnesota  
Pittsburgh, Pennsylvania  
Pleasanton, California  
Seattle, Washington  
St. Louis, Missouri  
Sunnyvale, California  
Tampa, Florida  
Tulsa, Oklahoma

**International business centers**

Cray Asia/Pacific Inc.  
Hong Kong  
  
Cray Canada Inc.  
Toronto, Canada  
  
Cray Research France S.A.  
Paris, France  
  
Cray Research GmbH  
Munich, West Germany  
  
Cray Research Japan, Limited  
Tokyo, Japan  
  
Cray Research S.R.L.  
Milan, Italy  
  
Cray Research (UK) Ltd.  
Bracknell, Berkshire, UK

AP-1000-H

©7/87, Cray Research, Inc.

---

**Cover Credit:**

Numerically generated streamlines about a modified F-16 configuration courtesy of NASA/Ames Research Center.  
Computations by Dr. Jolen Flores.