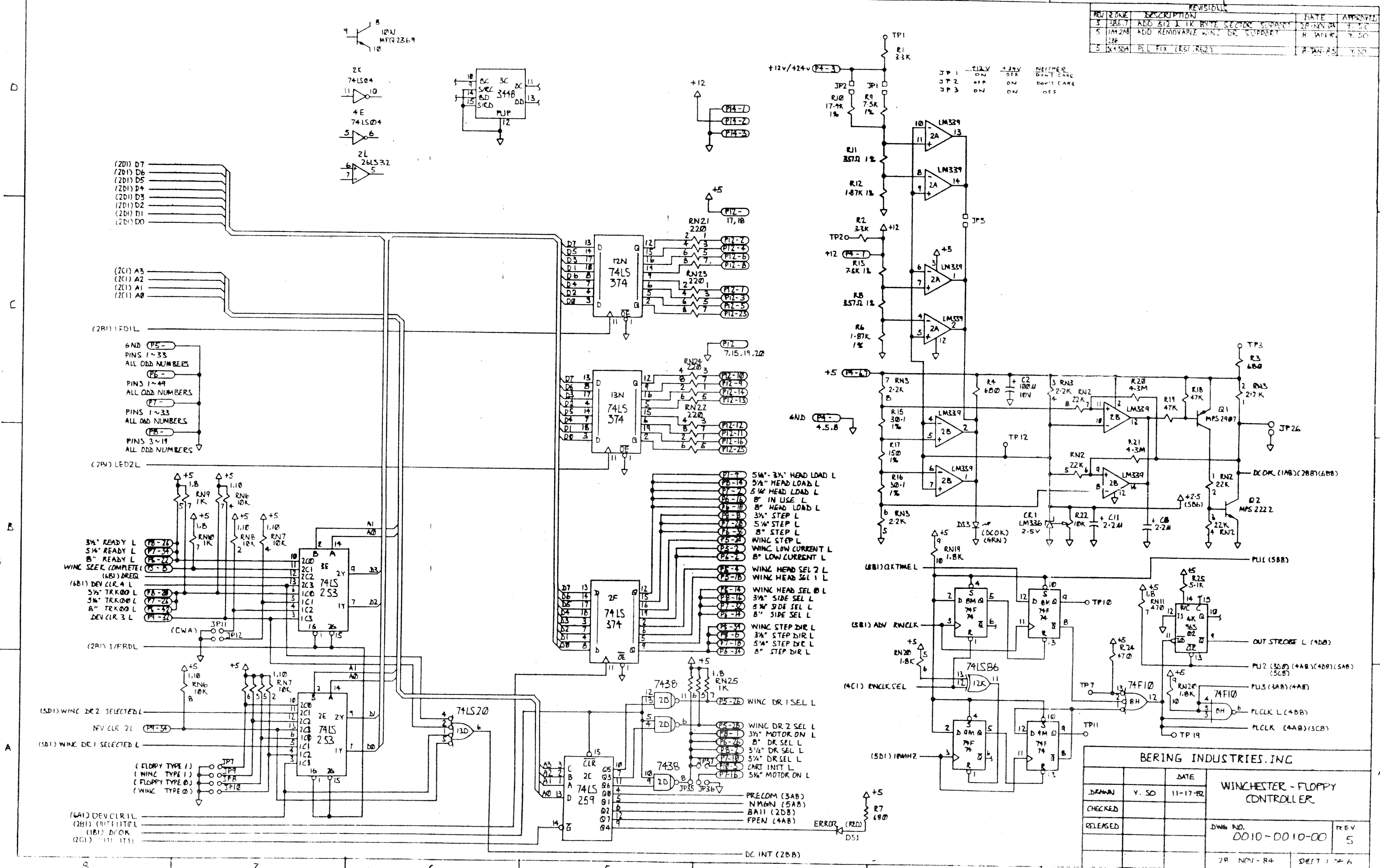


REV	ZONE	DESCRIPTION	DATE	APP'D
3	5B6.7	ADD 512 LTR BYTE SECTOR SUPPORT	9.1.80	
5	11M2AB 12B	ADD REMOVABLE WIND DR SUPPORT	11.17.82	Y. SO
5	5.150A	PLL FIX (R61, R62)	11.17.82	Y. SO

JP	12V	+5V	NEITHER
JP 1	ON	OFF	DONT CARE
JP 2	ON	ON	DONT CARE
JP 3	ON	ON	OFF



DRAWN		DATE	WINCHESTER - FLOPPY CONTROLLER	
Y. SO		11-17-82	DWG NO.	REV
CHECKED			0010-0010-00	5
RELEASED			29 NOV-84	SHEET 1 OF 6

(2D) D7
(2D) D6
(2D) D5
(2D) D4
(2D) D3
(2D) D2
(2D) D1
(2D) D0

(2C) A3
(2C) A2
(2C) A1
(2C) A0

(2R) 1FD1L

6ND (P5-)
PINS 1~33
ALL ODD NUMBERS
(P6-)
PINS 1~49
ALL ODD NUMBERS
(P7-)
PINS 1~33
ALL ODD NUMBERS
(P8-)
PINS 3~19
ALL ODD NUMBERS

(2R) LED2L

3 1/4" READY L (P6-26)
5 1/4" READY L (P7-34)
B" READY L (P6-27)
WIND SEEK COMPLETE (6B) DREQ (P5-5)
(6B) DEV CLR 4 L (P6-28)
3 1/4" TRK 00 L (P7-26)
5 1/4" TRK 00 L (P6-27)
DEV CLR 3 L (P9-32)

(2R) 1/PRDL

(5D) WIND DR 2 SELECTED L
REV CLR 2L (P4-35)
(5D) WIND DR 1 SELECTED L

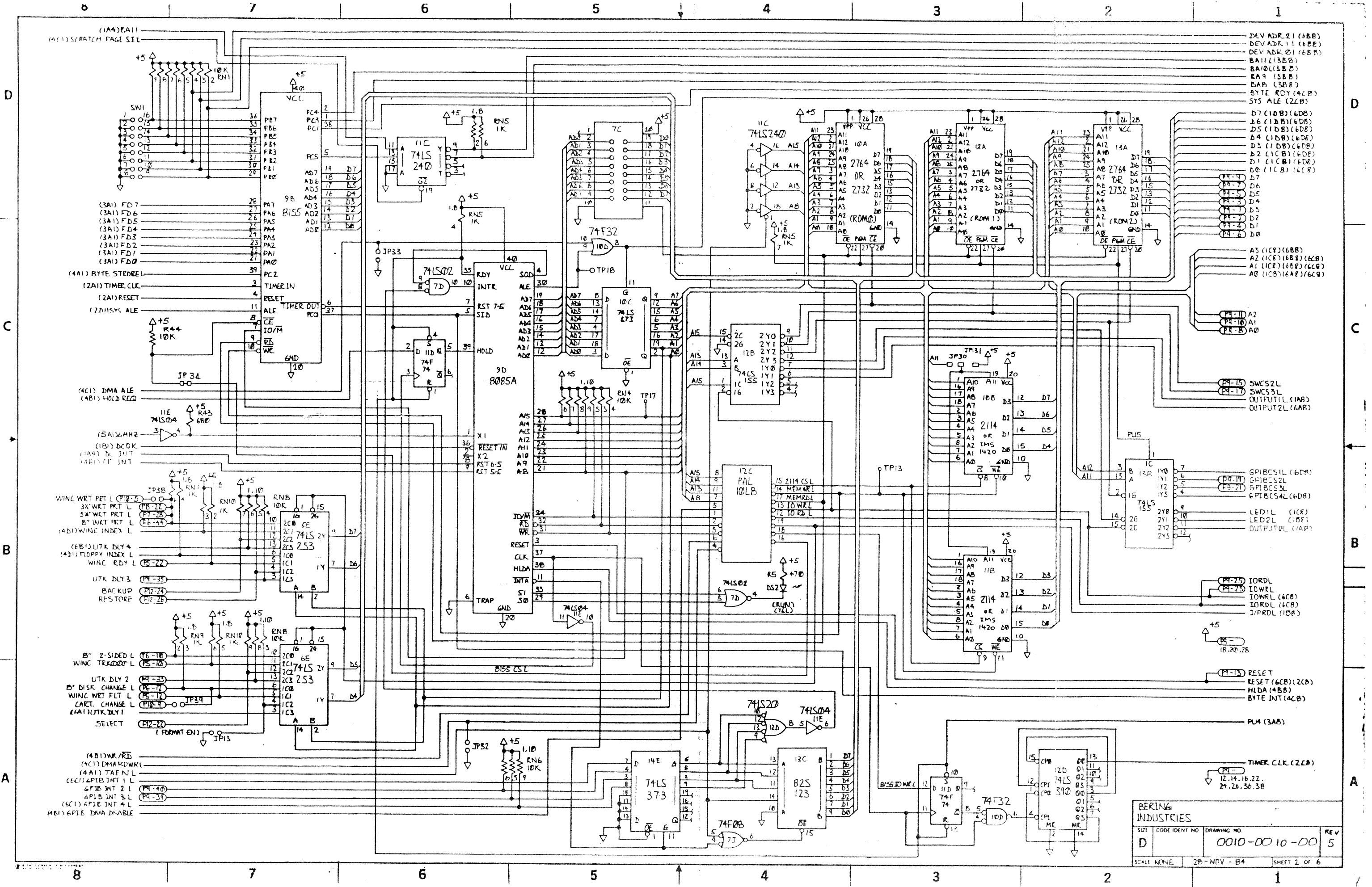
(FLOPPY TYPE 1)
(WIND TYPE 1)
(FLOPPY TYPE 0)
(WIND TYPE 0)

(6A) DEV CLR 1L
(2B) INIT 1TP1
(1B) DOK (1B) DOK
(2C) INIT 1TP1

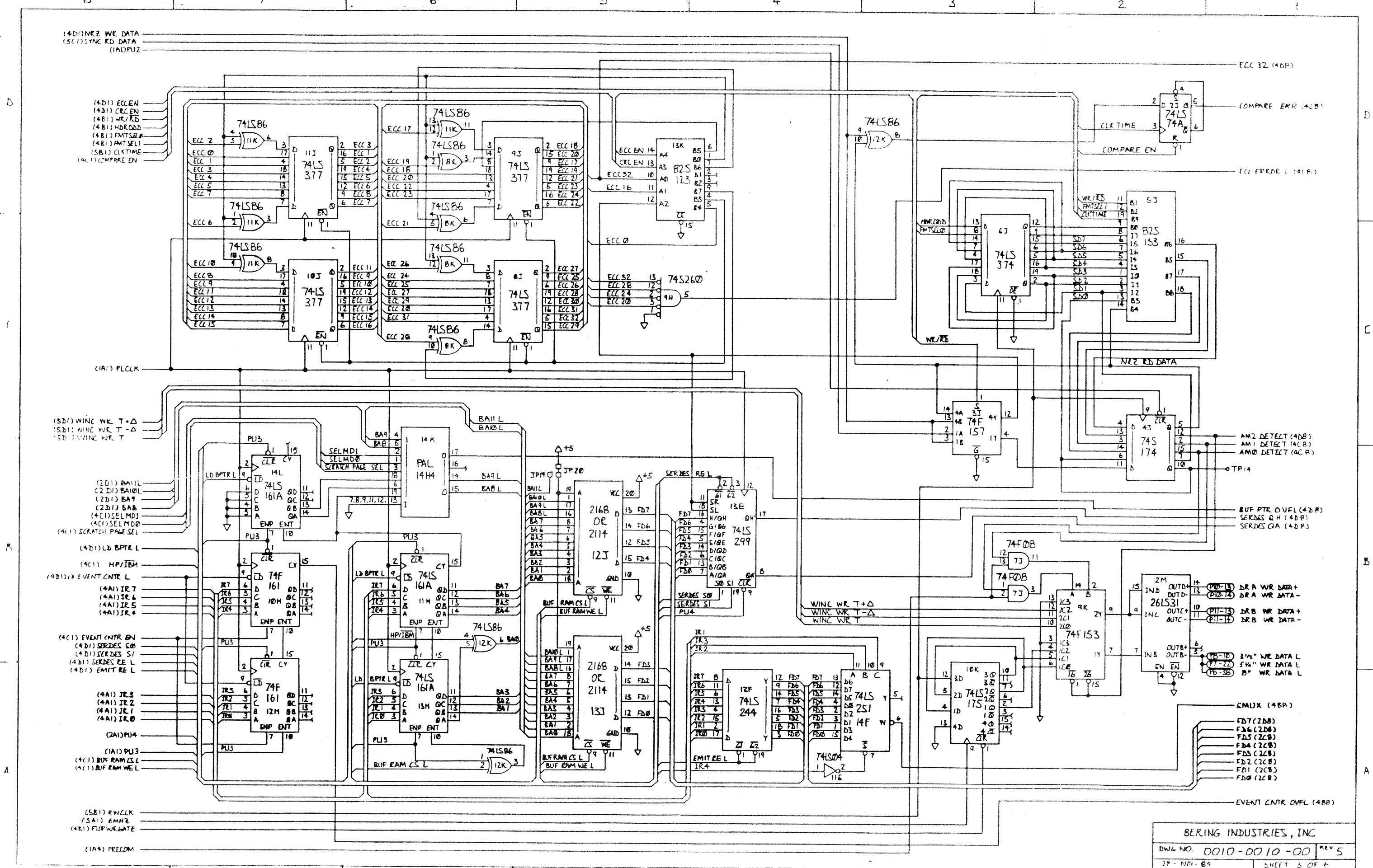
(P1-1) 5 1/4" 3 1/4" HEAD LOAD L
(P1-2) 5 1/4" HEAD LOAD L
(P1-3) B" IN USE L
(P1-4) B" HEAD LOAD L
(P1-5) 3 1/4" STEP L
(P1-6) 5 1/4" STEP L
(P1-7) B" STEP L
(P1-8) WIND STEP L
(P1-9) WIND LOW CURRENT L
(P1-10) B" LOW CURRENT L
(P1-11) WIND HEAD SEL 2 L
(P1-12) WIND HEAD SEL 1 L
(P1-13) WIND HEAD SEL 0 L
(P1-14) 3 1/4" SIDE SEL L
(P1-15) 5 1/4" SIDE SEL L
(P1-16) B" SIDE SEL L
(P1-17) WIND STEP DIR L
(P1-18) 3 1/4" STEP DIR L
(P1-19) 5 1/4" STEP DIR L
(P1-20) B" STEP DIR L
(P1-21) WIND DR 1 SEL L
(P1-22) WIND DR 2 SEL L
(P1-23) 3 1/4" MOTOR ON L
(P1-24) B" DR SEL L
(P1-25) 5 1/4" DR SEL L
(P1-26) 3 1/4" DR SEL L
(P1-27) 5 1/4" DR SEL L
(P1-28) CARI INIT L
(P1-29) 5 1/4" MOTOR ON L

PRECOM (3AB)
NMGN (5AB)
BA11 (2DB)
FPEN (4AB)
ERROR (RED)
DS1

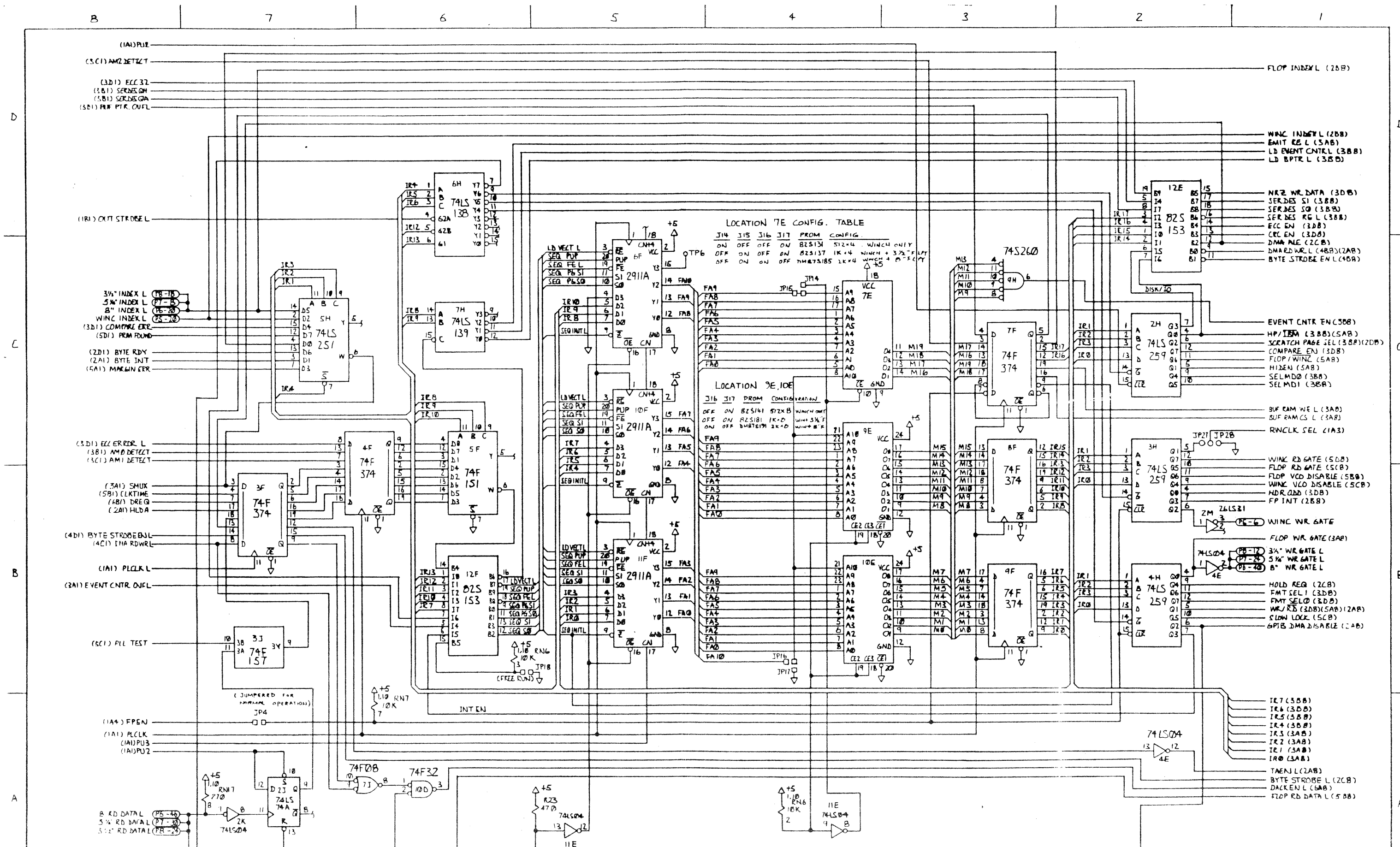
DC INT (2BB)



BERING INDUSTRIES			
SIZE	CODE IDENT NO	DRAWING NO	REV
D		0010-0010-00	5
SCALE NONE	28-NOV-84	SHEET 2 OF 6	



BERING INDUSTRIES, INC
DWG NO. 0010-0010-00 REV 5
28-NOV-84 SHEET 3 OF 4



LOCATION 7E CONFIG. TABLE

J14	J15	J16	J17	PROM	CONFIG.
ON	OFF	OFF	ON	82S131	512x4 WINCH ONLY
OFF	ON	OFF	ON	82S137	1Kx4 WINCH + 3 1/2" FLPT
OFF	ON	ON	OFF	DM87S185	2Kx4 WINCH + D-FLPT

LOCATION 9E, 10E

J16	J17	PROM	CONFIGURATION
OFF	ON	82S141	512x8 WINCH ONLY
OFF	ON	82S181	1Kx8 WINCH 3 1/2" FLPT
ON	OFF	DM87S191	2Kx8 WINCH 3 1/2" FLPT

(2B1) GPIBCS41

(2D1) D7
(2D1) D6
(2D1) D5
(2D1) D4
(2D1) D3
(2D1) D2
(2D1) D1
(2D1) D0

(2C1) A2
(2C1) A1
(2C1) A0

(2B1) IORDL
(2B1) IOWRL
(2A1) RESET
(5A1) 6MHZ

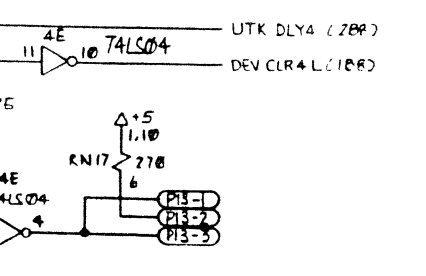
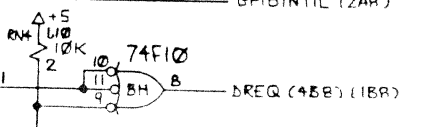
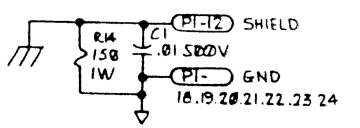
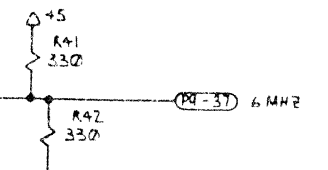
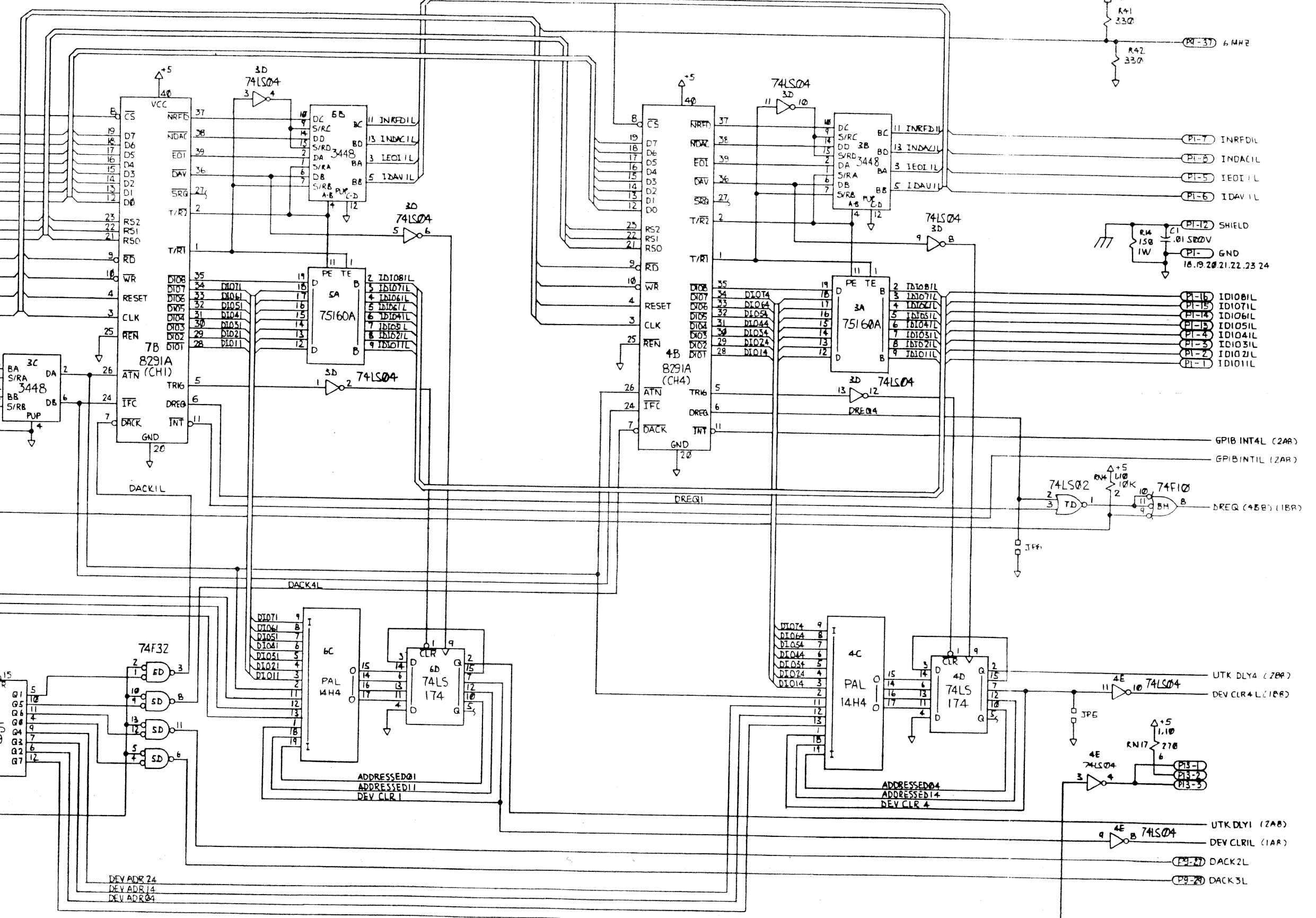
IATNIL (PI-11)
IIFCIL (PI-9)
ISRQIL (PI-10)
IRENIL (PI-17)

(2D1) DEV AD1 21
(2D1) DEV AD1 11
(2D1) DEV AD1 01

(2C1) A1
(2C1) A2
(2C1) A3

(2C1) A0
(2C1) OUTPUTZL

(4A1) DACKENL



BERING INDUSTRIES, INC
Dwg NO. 0010-0010-00 REV 5
28-NOV-84 SHEET 6 OF 6

