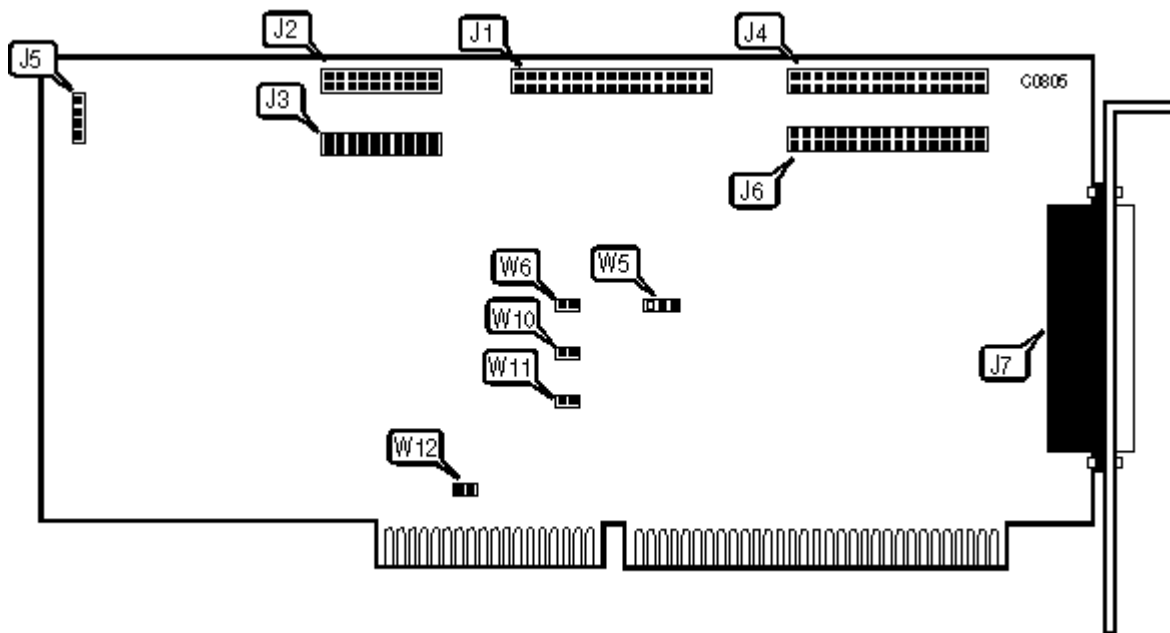


AMERICAN MULTISOURCE, INC.

SM4

- Data bus:** 16-bit ISA
- Size:** Three-quarter-length, full-height card
- Hard drive supported:** Two MFM ST506/412 drives
- Floppy drives supported:** Four 360KB, 720KB, 1.2MB, 1.44MB drives



CONNECTIONS	
Function	Location

34-pin control cable connector - hard drive	J1
20-pin data cable connector	J2
20-pin data cable connector	J3
34-pin connector - floppy drive interface (drives 1 & 2)	J4
4-pin connector - drive active LED	J5
34-pin connector - floppy drive interface (drives 3 & 4)	J6
34-pin connector - floppy drive interface (drives 3 & 4) - external	J7

USER CONFIGURABLE SETTINGS

Function		Location	Setting
»	Floppy drive interface address select primary	W8	open
	Floppy drive interface address select secondary	W8	closed
»	Hard drive address is primary	W11	open
	Hard drive address is secondary	W11	closed

HARD DRIVE INTERFACE CONFIGURATION

Setting	W5	W12
» Enabled	pins 2 & 3 closed	closed

	Disabled	pins 1 & 2 closed	open
FLOPPY DRIVE INTERFACE CONFIGURATION			
	Setting	W9	W10
»	Enabled	closed	closed
	Disabled	open	open
Note: The location of W9 is unidentified.			